

*Di-Modell*

UHR ARMBÄNDER

**Di-Modell GmbH & Co. KG**

Dienstadter Str. 6  
D-97953 Königheim

Phone: +49(0)9341 8485-0

Fax: +49(0)9341 8485-29

[info@di-modell.com](mailto:info@di-modell.com)

[www.di-modell.com](http://www.di-modell.com)

*Di-Modell*

UHR ARMBÄNDER

*Eleganz verbindet.*





## Perfektion ist unsere Passion

Perfection is our passion



### Verehrte Geschäftspartner,

mit hochwertigen Produkten den Erfolg sichern – das ist Ihr und natürlich auch unser Ziel. Als einer der weltweit führenden Lederuhrband-Hersteller präsentieren wir Ihnen mit diesem Katalog unsere aktuelle Kollektion. Vorzügliche Qualität herzustellen und bestmöglichen Service made in Germany zu bieten sind unsere tägliche Herausforderung.

Das Team von Di-Modell arbeitet mit großer LEIDENSCHAFT und PERFEKTION an immer neuen Ideen, um Ihre Kunden zu begeistern. Technische INNOVATIONEN und unsere patentierten Features, wie etwa der praktische Schlaufenanker, positionieren unsere Marke ganz klar im Wettbewerb. Geben auch Sie ein Stück unserer VISION vom perfekten Uhrarmband an Ihre Kunden weiter und profitieren Sie von deren FASZINATION.

### Dear Business Partner,

Ensure success with top quality products – that is your goal, and ours too, of course. As one of the world's leading manufacturers of leather watch straps, in this catalogue we present our current collection to you. Our daily challenges are to manufacture to top 'Made in Germany' quality and to offer the best possible service.

The Di-Modell team works with great PASSION and PERFECTION on ever new ideas, in order to inspire your customers. Technical INNOVATIONS and our patented features, such as the practical loop anchor, position our brand very clearly against the competition. You too should share our VISION of the perfect watchstrap with your customers, and profit from their FASCINATION.

Herzlichst Ihr  
Sincerely yours

A handwritten signature in blue ink, appearing to read 'C. Ehlbeck', written in a cursive style.

Claus-Peter Ehlbeck  
Geschäftsführer CEO



*Di-Modell*

MANUFAKTUR-  
QUALITÄT

aus Deutschland

Handwerkliches Geschick, Liebe zum Detail und der Anspruch täglich aufs Neue feine Markenqualität zu produzieren: Lederarmbänder von Di-Modell sind kleine Meisterwerke von außerordentlicher Qualität und zeitloser Eleganz.

In Königheim, gelegen im „Lieblichen Taubertal“ in Baden-Württemberg, verarbeitet unser Team behutsam und mit großem Respekt Leder aus der ganzen Welt.

Langjährige und vertrauensvolle Geschäftsbeziehungen zu unseren Vertriebspartnern tragen natürlich zum guten Ruf der Marke Di-Modell bei.

Als Partner unseres Hauses bieten Sie Ihren Kunden ein breites und gut sortiertes Armbandsortiment, mit dem Sie erfolgreich sein werden.

Profitieren Sie von unserem Service und der Bereitschaft, jederzeit auch anspruchsvolle Einzelanfertigungen zu liefern. Wir freuen uns auf Sie.

## Manufactur quality – „handmade in Germany“

Craftsman skills, love of detail, and the aspiration to produce fine branded quality each and every day: Leather watch straps from Di-Modell are miniature masterpieces of exceptional quality and timeless elegance.

In Koenigheim, located in the beautiful Taubertal valley in Baden-Wuerttemberg, our team works lovingly and with great respect, using leather from all over the world.

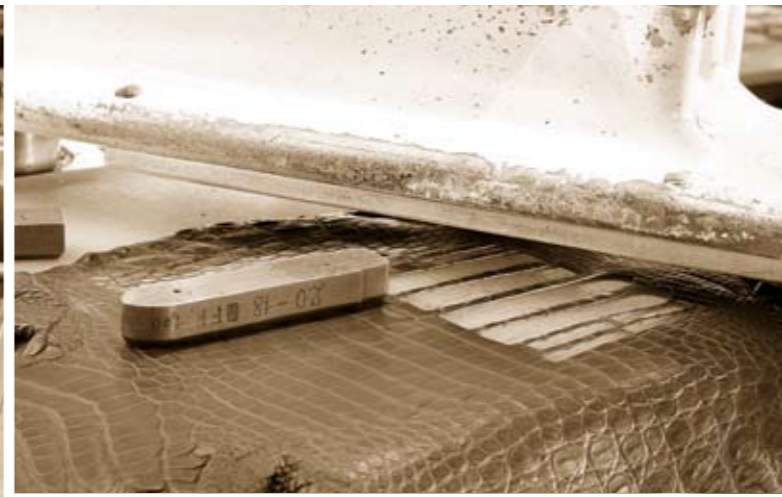
Confident long-term business relationships with our marketing partners naturally contribute to the good name of the Di-Modell brand.

As one of our partners, you offer your customers a wide and well selected range of watch straps with which you will be successful.

Profit from our service, and also from our readiness to supply sophisticated individual styles at any time. We look forward to working with you.

*Di-Modell*

MANUFAKTUR  
Manufacture



Seit Jahrzehnten fertigen wir unsere Lederarmbänder mit enormer Leidenschaft und großer Liebe zum Detail. Unsere Erfahrung sowie unser Anspruch Tag für Tag beste Qualität zu produzieren, garantieren Ihnen beste Produkte.

For decades, we have been making our leather watch straps with enormous passion and great attention to detail. Our experience, as well as our aspiration to produce the finest quality day in, day out, guarantee you the best products.

Di-Modell

## PERFEKTION IM DETAIL

### Perfection in detail

Unsere Di-Modell **NOBLE NH HOUSE** Bänder zeichnen sich gegenüber anderen Modellen durch folgende zusätzliche Qualitätsmerkmale besonders aus:

- AERO-Futter patentiert, für höchsten Tragekomfort
- Schlaufenanker international geschützt,
- „Handgefertigt in Deutschland“

Our Di-Modell **NOBLE NH HOUSE** offer some additional quality features:

- AERO lining, patented for the highest comfort
- Loop anchor, international protected,
- „Handcrafted in Germany“

### Schlaufenanker

#### Loop anchor

Schlaufenanker, international geschützt, gewährleistet den korrekten Sitz der losen Schlaufe und erhöht den Tragekomfort.

The internationally trademarked loop anchor guarantees the correct positioning of the loose loop while enhancing the wearing comfort.

Edelstahlschließen nickelfrei vergoldet  
stainless steel buckles,  
nickel-free gold-plated

gebuggte Schlaufen  
folded loops

patentiertes Aero-Futter  
erfahrungsgemäß anti-allergisch  
patented Aero lining, anti allergic

geformte, verstärkte Federstegöffnung für  
perfekten Sitz des Bandes an der Uhr  
formed and reinforced springbar holdings  
perfect fit between strap and watch

attraktives Design in klassischen  
oder modischen Farben  
attractive design in classic  
or fashion colours

sorgfältig ausgewählte Materialien  
carefully selected materials

Revolutionärer Tragekomfort  
durch Schlaufenanker  
Extraordinary comfort through  
our loop anchor

garantiert schweiß- und  
wasserfest gefertigt.  
guaranteed sweat- and  
water-resistand manufactured.

unübertroffene Haltbarkeit  
durch spezielle Verbundtechnik  
unsurpassable durability achieved  
by special sealing technology

Ziernähte  
decorative stitching

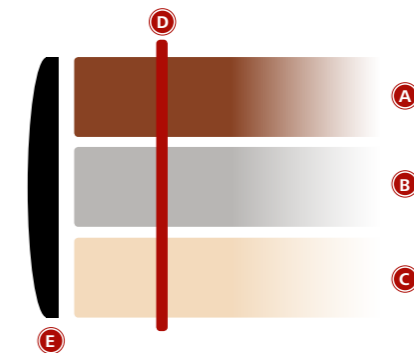
Prägung „Handgefertigt in Deutschland“  
(Rückseite)  
Hit stamp „Handcrafted Germany“  
(on reverse)

## AERO-Futter patentiert AERO-lining patented



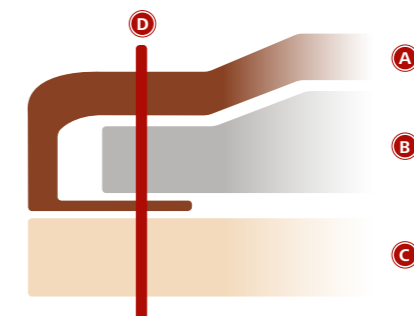
With love to detail

Schnittband  
Cut strap



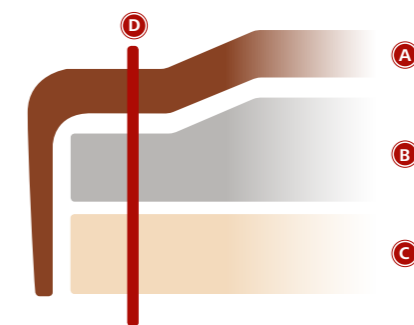
Dreilagiges Material. Die Schnittkante wird mit Farbe versiegelt.  
Three-layer material. The cut edge is sealed with a colour stain.

Rembordiertes-/Vollumbugband  
Remborded/Full wraparound finish strap



Das Oberleder wird um das Füllmaterial geschlungen und vom Futterleder nach unten abgedichtet.  
The upper leather is wrapped around the filling material, and is closed off by the lining leather underneath.

Semi-rembordiertes Band  
Semi-remborded strap



Das Oberleder umschließt den Bandkörper und das Futterleder bildet den Abschluß nach unten.  
The upper leather covers the body of the strap, and the lining leather creates the closure underneath.

- A** Oberleder  
Upper leather
- B** Füllmaterial  
Filling material
- C** Futterleder  
Lining leather
- D** Naht  
Stitching
- E** Lack  
Lacquer

## Quality features

### Leder – ein Naturprodukt

Leder ist weich, warm und anschmiegsam. Es ist ein Naturprodukt, welches Schwankungen in Farbe und Struktur unterliegen kann.

### Leather – a natural product

Leather is soft, warm and affectionate. It is a natural product which can have differences in colour and structure.

### Manufaktur

Di-Modell Uhrarmbänder sind handwerkliche Spitzenprodukte und werden aus edelsten Materialien gefertigt.

### Manufacture

Di-Modell leather straps are handmade and only precious materials are used.

### Garantie

Die verwendeten Materialien unterliegen strengsten Qualitätskontrollen. Alle Di-Modell Uhrarmbänder haben eine Kulanzgarantie auf fertigungstechnische Mängel.

### Warranty

The used materials are under a permanent quality control and all Di-Modell straps have a warranty for production defects.

### Qualität

Alle Di-Modell Uhrarmbänder sind „wasserfest“ einige speziell markierte Artikel sind sogar „Waterproof 100 m“. Wasserfest bedeutet, dass alle nach dem Semi-Rembordé Verfahren gefertigten Di-Modell Bänder an den Problemzonen versiegelt sind. „Waterproof 100 m“ sind Bänder, die aus einem speziell präparierten Leder gefertigt sind und auch extremen Beanspruchungen im Wasser standhalten.



### Quality

All Di-Modell straps are "water resistant", some models with a special indication are even "water proof 100 m". Our special technique of producing rembordé straps is sealing the straps and with this a water resistance is granted. For the water proof 100 m straps we are only using specially tanned leathers.

### Sicherheit

Die von uns verwendeten Materialien und bereits millionenfach problemlos getragene Bänder, erlauben den Begriff: „Erfahrungsgemäß antiallergisch“.



### Safety

The materials used by us and millions of satisfied consumers are allowing us to say that Di-Modell straps are anti-allergic by experience.

### Artenschutz

Alle unsere Reptilbänder respektieren das Washingtoner Artenschutzabkommen und zur Dokumentation sind sie mit der abgebildeten Artenschutzfahne (CITES) erhältlich.

### Protection of endangered species

All of our genuine reptile straps respect the decision of the Washington Convention and are labelled with species protection tag (CITES).





*Di-Modell*

**INHALT**

Content



|                      |    |
|----------------------|----|
| Balmoral             | 17 |
| Stirling             | 18 |
| Kensington           | 18 |
| Alligator Louisiana  | 19 |
| Alligator KN         | 19 |
| Krokodil Bentley     | 20 |
| Krokodil genäht      | 20 |
| Krokodil Klassik     | 21 |
| Krokodil Clip        | 21 |
| Teju Eidechse genäht | 22 |
| Strauß               | 22 |
| Eidechse Klassik     | 23 |
| Eidechse genäht      | 23 |
| Caracas              | 24 |
| Orlando              | 24 |
| Kalb genäht          | 25 |
| Kalb Klassik         | 25 |

**AIR-TER-MER**

|                         |    |
|-------------------------|----|
| Noblissimo              | 27 |
| Krokodil Chrono         | 28 |
| Teju Chrono             | 28 |
| Imperator waterproof    | 29 |
| Anfibio Polo waterproof | 29 |
| Haifisch waterproof     | 30 |
| Montana                 | 30 |
| Oregon handgenäht       | 31 |
| Sport waterproof        | 31 |
| Chronissimo waterproof  | 32 |
| Tornado                 | 32 |
| Venezuela               | 33 |
| Ikarus                  | 33 |
| Pilot                   | 34 |
| Offroad                 | 34 |
| Gaicho Chrono           | 35 |
| Polo Sherpa waterproof  | 35 |
| Rallye waterproof       | 36 |
| Dakar Sattelleder       | 36 |
| Chronoline bombiert     | 37 |
| Design waterproof       | 37 |
| Bali Chrono             | 38 |
| Jumbo                   | 38 |
| Carbonio                | 39 |
| Traveller waterproof    | 39 |

**BASIC**

|                  |    |
|------------------|----|
| Luxor waterproof | 41 |
| Cashmere         | 42 |
| Havanna          | 42 |
| Bali             | 43 |
| Bali KN          | 43 |
| Siena            | 44 |
| Gobi             | 44 |
| Java             | 45 |
| Savanna          | 45 |
| Colorado         | 46 |
| Taiga            | 46 |
| Tiffany          | 47 |
| Softina          | 47 |
| Topas            | 48 |
| Soft Pig         | 48 |
| Tivoli           | 49 |
| Media            | 49 |
| Kim              | 50 |
| Brillant         | 50 |
| Camel            | 51 |
| Elegance         | 51 |
| Nappa waterproof | 52 |
| Nappa Clip       | 52 |
| Bella            | 53 |
| Lifestyle        | 53 |
| Derby            | 54 |

**BÄNDER MIT FALTSCHLIESSE**

|                  |    |
|------------------|----|
| Krokodil FS      | 57 |
| Eidechse FS      | 57 |
| Bali FS          | 58 |
| Oregon FS        | 58 |
| Carbon Chrono FS | 59 |
| Haifisch FS      | 59 |

Die abgebildeten Farben auf den folgenden Seiten können nur Anhaltspunkte sein, weil Druckfarben Leder nicht so brillant wiedergeben können, wie sie in Wirklichkeit sind.

The colours shown on the following pages should be treated only as a guide, because print cannot reproduce the brilliant colours of the leather as they really are.



Di-Modell

NOBLE  HOUSE®



# Akzente setzen

Lead the way

## BALMORAL

Perrochen geschliffen, voll rebordiert, ungenäht, Schlaufenanker geschützt  
genuine Stingray, full-reborded, unstitched, loop anchor protected

Art.-Nr. 2985 Ladies  
1985 Men



|              | 07 | 06 | 28 | 10 |
|--------------|----|----|----|----|
| Ladies 14-14 | ●  | ●  | ●  | ●  |
| Ladies 16-16 | ●  | ●  | ●  | ●  |
| Ladies 18-18 | ●  | ●  | ●  | ●  |
| Ladies 20-18 | ●  | ●  | ●  | ●  |
| Men 18-18    | ●  | ●  | ●  | ●  |
| Men 20-18    | ●  | ●  | ●  | ●  |
| Men 22-20    | ●  | ●  | ●  | ●  |
| Men 24-22    | ●  | ●  | ●  | ●  |



### STIRLING

echtes Alligatorenleder mit echter Alligatorflanke abgefüttert, genäht, Schlaufenanker geschützt  
genuine Alligator with genuine Alligator lining, stitched, loop anchor protected

Art.-Nr. 1602 Men



|           |    |    |    |
|-----------|----|----|----|
|           | 11 | 28 | 10 |
| Men 18-16 | ●  | ●  | ●  |
| Men 20-18 | ●  | ●  | ●  |
| Men 22-20 | ●  | ●  | ●  |

Di-Modell



11 28 10

### KENSINGTON

echtes Krokoleder matt, Schnittkante, klassischer Verlauf für Goldschließen  
genuine crocodile, matt, cut-edge, special taper for gold buckles

Art.-Nr. 1890 Men



|           |    |    |    |
|-----------|----|----|----|
|           | 11 | 28 | 10 |
| Men 18-14 | ●  | ●  | ●  |
| Men 19-14 | ●  | ●  | ●  |
| Men 20-14 | ●  | ●  | ●  |

Di-Modell



11 28 10



NOBLE HOUSE

### ALLIGATOR LOUISIANA

hochwertiges Alligatorleder in klassischen Farben, AERO-Futter patentiert, Schlaufenanker geschützt  
high-quality alligator leather in classic colours, AERO lining patented, loop anchor protected

Art.-Nr. 2600 Ladies

1600 Men, 1601 XL



|              |    |    |    |    |    |    |    |    |    |    |    |
|--------------|----|----|----|----|----|----|----|----|----|----|----|
|              | 01 | 03 | 27 | 07 | 19 | 17 | 06 | 20 | 11 | 28 | 10 |
| Ladies 18-16 | ●  | ●  | ●  | ●  | ●  | ●  | ●  | ●  | ●  | ●  | ●  |
| Ladies 20-18 | ●  | ●  | ●  | ●  | ●  | ●  | ●  | ●  | ●  | ●  | ●  |
| Ladies 22-18 | ●  | ●  | ●  | ●  | ●  | ●  | ●  | ●  | ●  | ●  | ●  |
| Men 16-15    |    |    |    |    |    |    | □  | □  | □  | □  | □  |
| Men 17-16    |    |    |    |    |    |    | □  | □  | □  | □  | □  |
| Men 18-16    | ●  | ●  | ●  | ●  | ●  | ●  | □  | □  | □  | □  | □  |
| Men 19-18    | ●  | ●  | ●  | ●  | ●  | ●  | □  | □  | □  | □  | □  |
| Men 20-18    | ●  | ●  | ●  | ●  | ●  | ●  | □  | □  | □  | □  | □  |
| Men 22-18    | ●  | ●  | ●  | ●  | ●  | ●  | □  | □  | □  | □  | □  |
| Men 24-20    | ●  | ●  | ●  | ●  | ●  | ●  | □  | □  | □  | □  | □  |

Di-Modell



01 03 27 07 19 17 06 20 11 28 10

### ALLIGATOR KN

hochwertiges Alligatorleder in klassischen Farben, AERO-Futter patentiert, Schlaufenanker geschützt, Kontrastnaht beige  
high-quality alligator leather in classic colours, AERO lining patented, loop anchor protected, contrast seam beige

Art.-Nr. 1603 Men

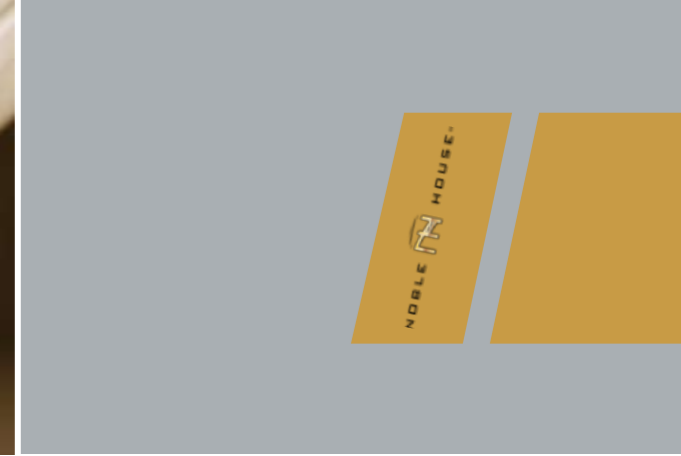
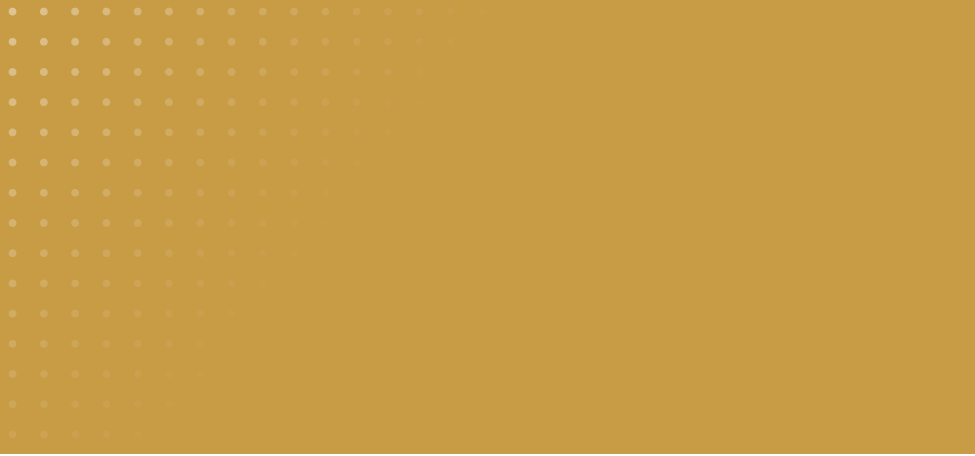


|           |    |    |    |    |    |
|-----------|----|----|----|----|----|
|           | 06 | 20 | 11 | 28 | 10 |
| Men 18-16 | ●  | ●  | ●  | ●  | ●  |
| Men 20-18 | ●  | ●  | ●  | ●  | ●  |
| Men 22-18 | ●  | ●  | ●  | ●  | ●  |

Di-Modell



06 20 11 28 10



### KROKODIL BENTLEY

mattes Krokodilleder, bombiert, AERO-Futter patentiert, Schlaufenanker geschützt  
genuine crocodile matt, padded, AERO lining, loop anchor protected

Art.-Nr. 3035 Men



|           |    |    |    |    |    |    |
|-----------|----|----|----|----|----|----|
|           | 06 | 20 | 18 | 11 | 28 | 10 |
| Men 18-16 | ●  | ●  | ●  | ●  | ●  | ●  |
| Men 20-18 | ●  | ●  | ●  | ●  | ●  | ●  |
| Men 22-20 | ●  | ●  | ●  | ●  | ●  | ●  |

Di-Modell



### KROKODIL KLASSIK

echtes Krokodilleder in klassischen Farben, glatt, AERO-Futter patentiert, Schlaufenanker geschützt  
genuine crocodile shiny in classic colours, AERO lining patented, loop anchor protected

Art.-Nr. 2615 Ladies  
1615 Men



|              |    |    |    |    |
|--------------|----|----|----|----|
|              | 06 | 11 | 28 | 10 |
| Ladies 8-7,5 | ●  | ●  | ●  | ●  |
| Ladies 10-9  | ●  | ●  | ●  | ●  |
| Ladies 11-10 | ●  | ●  | ●  | ●  |
| Ladies 12-10 | ●  | ●  | ●  | ●  |
| Ladies 13-12 | ●  | ●  | ●  | ●  |
| Ladies 14-12 | ●  | ●  | ●  | ●  |
| Ladies 15-14 | ●  | ●  | ●  | ●  |
| Men 16-15    | ●  | ●  | ●  | ●  |
| Men 17-16    | ●  | ●  | ●  | ●  |
| Men 18-16    | ●  | ●  | ●  | ●  |
| Men 19-16    | ●  | ●  | ●  | ●  |
| Men 20-18    | ●  | ●  | ●  | ●  |

Di-Modell



### KROKODIL GENÄHT

echtes Krokodilleder in modischen Farben, AERO-Futter patentiert, Schlaufenanker geschützt  
genuine crocodile shiny in trendy colours, AERO lining patented, loop anchor protected

Art.-Nr. 2610 Ladies, 2611 XL  
1610 Men, 1611 XL



|              |    |    |    |    |    |    |    |    |    |    |
|--------------|----|----|----|----|----|----|----|----|----|----|
|              | 07 | 08 | 19 | 17 | 05 | 06 | 13 | 11 | 28 | 10 |
| Ladies 8-7,5 | ●  | ●  | ●  | ●  | ●  | ●  | ●  | ●  | ●  | ●  |
| Ladies 10-9  | ●  | ●  | ●  | ●  | ●  | ●  | ●  | ●  | ●  | ●  |
| Ladies 11-10 | ●  | ●  | ●  | ●  | ●  | ●  | ●  | ●  | ●  | ●  |
| Ladies 12-10 | ●  | ●  | ●  | ●  | ●  | ●  | □  | □  | □  | □  |
| Ladies 13-12 | ●  | ●  | ●  | ●  | ●  | ●  | □  | □  | □  | □  |
| Ladies 14-12 | ●  | ●  | ●  | ●  | ●  | ●  | □  | □  | □  | □  |
| Ladies 15-14 | ●  | ●  | ●  | ●  | ●  | ●  | □  | □  | □  | □  |
| Ladies 16-14 | ●  | ●  | ●  | ●  | ●  | ●  | □  | □  | □  | □  |
| Ladies 18-16 | ●  | ●  | ●  | ●  | ●  | ●  | □  | □  | □  | □  |
| Men 16-15    | ●  | ●  | ●  | ●  | ●  | ●  | □  | □  | □  | □  |
| Men 17-16    | ●  | ●  | ●  | ●  | ●  | ●  | □  | □  | □  | □  |
| Men 18-16    | ●  | ●  | ●  | ●  | ●  | ●  | □  | □  | □  | □  |
| Men 19-16    | ●  | ●  | ●  | ●  | ●  | ●  | □  | □  | □  | □  |
| Men 20-18    | ●  | ●  | ●  | ●  | ●  | ●  | □  | □  | □  | □  |
| Men 22-18    | ●  | ●  | ●  | ●  | ●  | ●  | □  | □  | □  | □  |
| Men 24-20    | ●  | ●  | ●  | ●  | ●  | ●  | □  | □  | □  | □  |

Di-Modell



### KROKODIL CLIP

hochwertiges Krokodilleder mit Metallclip, Schlaufenanker geschützt  
high-quality crocodile leather with metal clip, loop anchor protected

Art.-Nr. 2085 Ladies  
1085 Men



|               |    |    |    |
|---------------|----|----|----|
|               | 11 | 28 | 10 |
| Ladies 8-7,5  | ●  | ●  | ●  |
| Ladies 10-7,5 | ●  | ●  | ●  |
| Ladies 12-7,5 | ●  | ●  | ●  |
| Ladies 14-7,5 | ●  | ●  | ●  |
| Men 16-14     | ●  | ●  | ●  |
| Men 18-14     | ●  | ●  | ●  |
| Men 20-14     | ●  | ●  | ●  |

Di-Modell





### TEJU EIDECHSE GENÄHT

echtes Teju-Eidechsenleder in modischen Farben,  
AERO-Futter patentiert, Schlaufenanker geschützt  
shiny Teju lizard in fashionable colours,  
AERO lining patented, loop anchor protected

Art.-Nr. 2625 Ladies  
1625 Men



|              | 08 | 19 | 05 | 13 | 11 | 28 | 10 |
|--------------|----|----|----|----|----|----|----|
| Ladies 12-10 | ●  | ●  | ●  | ●  | ●  | ●  | ●  |
| Ladies 13-12 | ●  | ●  | ●  | ●  | ●  | ●  | ●  |
| Ladies 14-12 | ●  | ●  | ●  | ●  | ●  | ●  | ●  |
| Ladies 15-14 | ●  | ●  | ●  | ●  | ●  | ●  | ●  |
| Ladies 16-14 | ●  | ●  | ●  | ●  | ●  | ●  | ●  |
| Ladies 18-16 | ●  | ●  | ●  | ●  | ●  | ●  | ●  |
| Men 16-15    | ●  | ●  | ●  | ●  | ●  | ●  | ●  |
| Men 17-16    | ●  | ●  | ●  | ●  | ●  | ●  | ●  |
| Men 18-16    | ●  | ●  | ●  | ●  | ●  | ●  | ●  |
| Men 19-16    | ●  | ●  | ●  | ●  | ●  | ●  | ●  |
| Men 20-18    | ●  | ●  | ●  | ●  | ●  | ●  | ●  |
| Men 22-18    | ●  | ●  | ●  | ●  | ●  | ●  | ●  |
| Men 24-20    | ●  | ●  | ●  | ●  | ●  | ●  | ●  |

Di-Modell



### EIDECHSE KLASSIK

echtes Eidechsenleder glänzend in modischen  
Farben, glatt, AERO-Futter patentiert,  
Schlaufenanker geschützt  
shiny genuine lizard in trendy colours,  
unstitched, AERO lining patented, loop  
anchor protected

Art.-Nr. 2645 Ladies, 2646 XL  
1645 Men, 1646 XL



|              | 03 | 07 | 08 | 19 | 06 | 13 | 11 | 28 | 10 |
|--------------|----|----|----|----|----|----|----|----|----|
| Ladies 8-7,5 | ●  | ●  | ●  | ●  | ●  | ●  | ●  | ●  | ●  |
| Ladies 9-7,5 | ●  | ●  | ●  | ●  | ●  | ●  | ●  | ●  | ●  |
| Ladies 10-9  | ●  | ●  | ●  | ●  | ●  | ●  | ●  | ●  | ●  |
| Ladies 11-10 | ●  | ●  | ●  | ●  | ●  | ●  | ●  | ●  | ●  |
| Ladies 12-10 | ●  | ●  | ●  | ●  | ●  | ●  | ●  | ●  | ●  |
| Ladies 13-12 | ●  | ●  | ●  | ●  | ●  | ●  | ●  | ●  | ●  |
| Ladies 14-12 | ●  | ●  | ●  | ●  | ●  | ●  | ●  | ●  | ●  |
| Ladies 15-14 | ●  | ●  | ●  | ●  | ●  | ●  | ●  | ●  | ●  |
| Ladies 16-14 | ●  | ●  | ●  | ●  | ●  | ●  | ●  | ●  | ●  |
| Ladies 20-18 | ●  | ●  | ●  | ●  | ●  | ●  | ●  | ●  | ●  |
| Men 16-15    | ●  | ●  | ●  | ●  | ●  | ●  | ●  | ●  | ●  |
| Men 17-16    | ●  | ●  | ●  | ●  | ●  | ●  | ●  | ●  | ●  |
| Men 18-16    | ●  | ●  | ●  | ●  | ●  | ●  | ●  | ●  | ●  |
| Men 19-16    | ●  | ●  | ●  | ●  | ●  | ●  | ●  | ●  | ●  |
| Men 20-18    | ●  | ●  | ●  | ●  | ●  | ●  | ●  | ●  | ●  |

Di-Modell



### STRAUSS

echtes Straußenleder in modischen Farben,  
AERO-Futter patentiert, Schlaufenanker geschützt  
genuine ostrich in trendy colours, AERO lining  
patented, loop anchor protected

Art.-Nr. 2630 Ladies  
1630 Men



|              | 03 | 25 | 07 | 19 | 06 | 13 | 20 | 28 | 10 |
|--------------|----|----|----|----|----|----|----|----|----|
| Ladies 12-10 | ●  | ●  | ●  | ●  | ●  | ●  | ●  | ●  | ●  |
| Ladies 13-12 | ●  | ●  | ●  | ●  | ●  | ●  | ●  | ●  | ●  |
| Ladies 14-12 | ●  | ●  | ●  | ●  | ●  | ●  | ●  | ●  | ●  |
| Ladies 15-14 | ●  | ●  | ●  | ●  | ●  | ●  | ●  | ●  | ●  |
| Ladies 16-14 | ●  | ●  | ●  | ●  | ●  | ●  | ●  | ●  | ●  |
| Ladies 18-16 | ●  | ●  | ●  | ●  | ●  | ●  | ●  | ●  | ●  |
| Men 16-15    | ●  | ●  | ●  | ●  | ●  | ●  | ●  | ●  | ●  |
| Men 17-16    | ●  | ●  | ●  | ●  | ●  | ●  | ●  | ●  | ●  |
| Men 18-16    | ●  | ●  | ●  | ●  | ●  | ●  | ●  | ●  | ●  |
| Men 19-18    | ●  | ●  | ●  | ●  | ●  | ●  | ●  | ●  | ●  |
| Men 20-18    | ●  | ●  | ●  | ●  | ●  | ●  | ●  | ●  | ●  |

Di-Modell



### EIDECHSE GENÄHT

echtes Eidechsenleder genäht in klassischen Farben,  
AERO-Futter patentiert, Schlaufenanker geschützt  
genuine lizard stitched in classic colours,  
AERO lining patented, loop anchor protected

Art.-Nr. 2685 Ladies  
1685 Men



|              | 08 | 06 | 11 | 28 | 10 |
|--------------|----|----|----|----|----|
| Ladies 10-9  | ●  | ●  | ●  | ●  | ●  |
| Ladies 12-10 | ●  | ●  | ●  | ●  | ●  |
| Ladies 14-12 | ●  | ●  | ●  | ●  | ●  |
| Ladies 16-14 | ●  | ●  | ●  | ●  | ●  |
| Ladies 18-16 | ●  | ●  | ●  | ●  | ●  |
| Men 16-15    | ●  | ●  | ●  | ●  | ●  |
| Men 17-16    | ●  | ●  | ●  | ●  | ●  |
| Men 18-16    | ●  | ●  | ●  | ●  | ●  |
| Men 19-16    | ●  | ●  | ●  | ●  | ●  |
| Men 20-18    | ●  | ●  | ●  | ●  | ●  |

Di-Modell





### CARACAS

Kalbleder in Alligaturoptik flach, genäht, gefärbte Kante, AERO-Futter patentiert, Schlaufenanker geschützt  
 calfskin with Alligator pattern, flat, colored edges, AERO lining patented, loop anchor protected

Art.-Nr. 2695 Ladies  
 1695 Men



|              |    |    |    |    |
|--------------|----|----|----|----|
|              | 13 | 18 | 28 | 10 |
| Ladies 12-10 | ●  | ●  | ●  | ●  |
| Ladies 14-12 | ●  | ●  | ●  | ●  |
| Ladies 16-14 | ●  | ●  | ●  | ●  |
| Ladies 18-16 | ●  | ●  | ●  | ●  |
| Ladies 20-16 | ●  | ●  | ●  | ●  |
| Men 16-15    | ●  | ●  | ●  | ●  |
| Men 17-16    | ●  | ●  | ●  | ●  |
| Men 18-16    | ●  | ●  | ●  | ●  |
| Men 19-16    | ●  | ●  | ●  | ●  |
| Men 20-16    | ●  | ●  | ●  | ●  |
| Men 22-18    | ●  | ●  | ●  | ●  |



### KALB GENÄHT WATERPROOF

elegantes Kalbleder in klassischen Farben, waterproof 100 m, AERO-Futter patentiert, Schlaufenanker geschützt  
 Elegant calfskin in classic colours, waterproof 100 m, AERO lining patented, loop anchor protected

Art.-Nr. 2660 Ladies, 2661 XL  
 1660 Men, 1661 XL



|              |    |    |    |    |    |    |    |    |    |
|--------------|----|----|----|----|----|----|----|----|----|
|              | 14 | 07 | 08 | 19 | 06 | 13 | 18 | 28 | 10 |
| Ladies 10-9  | ●  | ●  | ●  | ●  | ●  | ●  | ●  | ●  | ●  |
| Ladies 11-10 | ●  | ●  | ●  | ●  | ●  | ●  | ●  | ●  | ●  |
| Ladies 12-10 | □  | ●  | ●  | ●  | ●  | ●  | ●  | ●  | □  |
| Ladies 13-12 | □  | ●  | ●  | ●  | ●  | ●  | ●  | ●  | □  |
| Ladies 14-12 | □  | ●  | ●  | ●  | ●  | ●  | ●  | ●  | □  |
| Ladies 15-14 | □  | ●  | ●  | ●  | ●  | ●  | ●  | ●  | □  |
| Ladies 16-14 | □  | ●  | ●  | ●  | ●  | ●  | ●  | ●  | □  |
| Ladies 18-16 | □  | ●  | ●  | ●  | ●  | ●  | ●  | ●  | □  |
| Men 16-15    | ●  | ●  | ●  | ●  | ●  | ●  | ●  | ●  | ●  |
| Men 17-16    | ●  | ●  | ●  | ●  | ●  | ●  | ●  | ●  | ●  |
| Men 18-16    | □  | ●  | ●  | ●  | ●  | ●  | ●  | ●  | □  |
| Men 19-16    | □  | ●  | ●  | ●  | ●  | ●  | ●  | ●  | □  |
| Men 20-18    | □  | ●  | ●  | ●  | ●  | ●  | ●  | ●  | □  |
| Men 22-18    | □  | ●  | ●  | ●  | ●  | ●  | ●  | ●  | □  |



### ORLANDO

Kalbleder mit exquisiter Louisiana-Prägung, AERO-Futter patentiert, Schlaufenanker geschützt  
 calfskin with Louisiana pattern, AERO lining patented, loop anchor protected

Art.-Nr. 2690 Ladies  
 1690 Men



|              |    |    |    |    |
|--------------|----|----|----|----|
|              | 06 | 11 | 28 | 10 |
| Ladies 14-12 | ●  | ●  | ●  | ●  |
| Men 18-16    | ●  | ●  | ●  | ●  |
| Men 20-18    | ●  | ●  | ●  | ●  |



### KALB KLASSIK WATERPROOF

elegantes Kalbleder in klassischen Farben, waterproof 100 m, AERO-Futter patentiert, Schlaufenanker geschützt  
 elegant calfskin in classic colours, waterproof 100 m, AERO lining patented, loop anchor protected

Art.-Nr. 2665 Ladies  
 1665 Men



|              |    |    |    |    |
|--------------|----|----|----|----|
|              | 14 | 06 | 28 | 10 |
| Ladies 8-7,5 | ●  | ●  | ●  | ●  |
| Ladies 10-9  | ●  | ●  | ●  | ●  |
| Ladies 12-10 | ●  | ●  | ●  | ●  |
| Ladies 13-12 | ●  | ●  | ●  | ●  |
| Ladies 14-12 | ●  | ●  | ●  | ●  |
| Ladies 15-14 | ●  | ●  | ●  | ●  |
| Ladies 16-14 | ●  | ●  | ●  | ●  |
| Ladies 18-16 | ●  | ●  | ●  | ●  |
| Men 16-15    | ●  | ●  | ●  | ●  |
| Men 17-16    | ●  | ●  | ●  | ●  |
| Men 18-16    | ●  | ●  | ●  | ●  |
| Men 19-16    | ●  | ●  | ●  | ●  |
| Men 20-18    | ●  | ●  | ●  | ●  |





*Di-Modell*

AIR-TER-MER

# Aktiv und individuell

Active and individualised

**NOBLISSIMO**  
 Chronoband in Alligatorprägung, Speziallänge für Chronographen, waterproof 100 m, Schlaufenanker geschützt  
 chronostrap with Alligator pattern surface, special length, waterproof 100 m, loop anchor protected

Art.-Nr. 1385 Men



- Men 20-20 ●
- Men 22-20 ●
- Men 24-20 ●

*Di-Modell*





### KROKODIL CHRONO

mattes Krokodilleder für Chronographen, Speziallänge, AERO-Futter patentiert, Schlaufenanker geschützt  
genuine crocodile in matte finish with Chrono padding, special length, AERO lining patented, loop anchor protected

Art.-Nr. 1605 Men



|           |    |    |    |    |
|-----------|----|----|----|----|
|           | 06 | 11 | 28 | 10 |
| Men 18-18 | ●  | ●  | ●  | ●  |
| Men 20-18 | ●  | ●  | ●  | ●  |
| Men 22-18 | ●  | ●  | ●  | ●  |
| Men 24-20 | ●  | ●  | ●  | ●  |



### IMPERATOR WATERPROOF

klassisches Kalbleder mit Louisiana-Prägung Aufsatz, waterproof 100 m, Speziallänge für Chronographen, AERO-Futter patentiert, Schlaufenanker geschützt  
classic calfskin, combined with Alligator pattern on top, waterproof 100 m, special length for Chronos, AERO lining patented, loop anchor protected

Art.-Nr. 2635 Ladies  
1635 Men



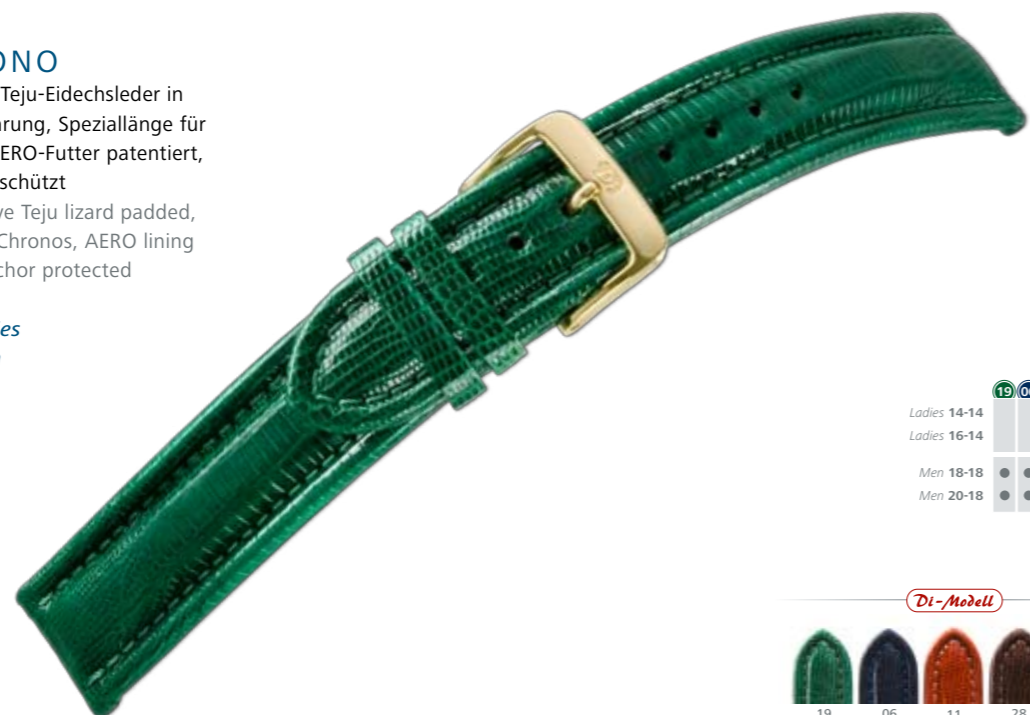
|              |    |    |    |    |    |
|--------------|----|----|----|----|----|
|              | 19 | 06 | 11 | 28 | 10 |
| Ladies 18-18 | ●  | ●  | ●  | ●  | ●  |
| Ladies 20-18 | ●  | ●  | ●  | ●  | ●  |
| Ladies 22-18 | ●  | ●  | ●  | ●  | ●  |
| Men 18-18    | ●  | ●  | ●  | ●  | ●  |
| Men 19-18    | ●  | ●  | ●  | ●  | ●  |
| Men 20-18    | ●  | ●  | ●  | ●  | ●  |
| Men 22-18    | ●  | ●  | ●  | ●  | ●  |
| Men 24-20    | ●  | ●  | ●  | ●  | ●  |



### TEJU CHRONO

modisch sportives Teju-Eidechsenleder in bombierter Ausführung, Speziallänge für Chronographen, AERO-Futter patentiert, Schlaufenanker geschützt  
fashionable sportive Teju lizard padded, special length for Chronos, AERO lining patented, loop anchor protected

Art.-Nr. 2620 Ladies  
1620 Men



|              |    |    |    |    |    |
|--------------|----|----|----|----|----|
|              | 19 | 06 | 11 | 28 | 10 |
| Ladies 14-14 | ●  | ●  | ●  | ●  | ●  |
| Ladies 16-14 | ●  | ●  | ●  | ●  | ●  |
| Men 18-18    | ●  | ●  | ●  | ●  | ●  |
| Men 20-18    | ●  | ●  | ●  | ●  | ●  |



### ANFIBIO POLO WATERPROOF

stark gewulstetes Rindleder, waterproof 100 m, Speziallänge für Chronographen, AERO-Futter patentiert, Schlaufenanker geschützt  
heavily padded cowhide leather, waterproof 100 m, special length for Chronos, AERO lining patented, loop anchor protected

Art.-Nr. 1640 Men



|           |    |    |
|-----------|----|----|
|           | 18 | 10 |
| Men 18-18 | ●  | ●  |
| Men 20-18 | ●  | ●  |
| Men 22-18 | ●  | ●  |
| Men 24-20 | ●  | ●  |





### HAIFISCH WATERPROOF

sportliches Haifischleder, waterproof 100 m,  
AERO-Futter patentiert, Schlaufenanker geschützt  
sportively designed shark leather,  
waterproof 100 m, AERO lining patented,  
loop anchor protected

Art.-Nr. 1650 Men, 1651 XL



|           | 07 | 19 | 05 | 06 | 28 | 10 |
|-----------|----|----|----|----|----|----|
| Men 18-16 | ●  | ●  | □  | □  | □  | □  |
| Men 19-18 | ●  | ●  | □  | □  | □  | □  |
| Men 20-18 | ●  | ●  | □  | □  | □  | □  |
| Men 22-18 | ●  | ●  | □  | □  | □  | □  |
| Men 24-20 | ●  | ●  | □  | □  | □  | □  |



### OREGON HANDGENÄHT

vegetabil gegerbtes Sattelleder, handgenäht,  
AERO-Futter patentiert, Schlaufenanker geschützt  
vegetably tanned saddleleather, handstitched,  
AERO lining patented, loop anchor protected

Art.-Nr. 1670 Men, 1671 XL



|           | 06 | 02 | 28 | 10 |
|-----------|----|----|----|----|
| Men 18-16 | □  | □  | □  | □  |
| Men 19-18 | □  | □  | □  | □  |
| Men 20-18 | □  | □  | □  | □  |
| Men 22-18 | □  | □  | □  | □  |
| Men 24-22 | ●  | ●  | ●  | ●  |



### MONTANA

weiches Naturleder in sportlicher  
Ausführung, AERO-Futter patentiert,  
Schlaufenanker geschützt  
soft and natural leather in sportive  
execution, AERO lining patented,  
loop anchor protected

Art.-Nr. 1655 Men



|           | 18 | 10 |
|-----------|----|----|
| Men 18-16 | ●  | ●  |
| Men 20-18 | ●  | ●  |
| Men 22-18 | ●  | ●  |



### SPORT WATERPROOF

weiches, natürlich geschrumpftes Rindleder in  
klassischen Farben, waterproof 100 m, farblich  
abgestimmt lackierte Edelstahlschließe, AERO-  
Futter patentiert, Schlaufenanker geschützt  
smooth naturally shrunken cowhide leather  
in classic colours, waterproof 100 m,  
coated stainless steel buckles in strap colour,  
AERO lining patented, loop anchor protected

Art.-Nr. 2675 Ladies, 2676 XL  
1675 Men, 1676 XL



|              | 05 | 06 | 13 | 18 | 28 | 10 |
|--------------|----|----|----|----|----|----|
| Ladies 12-12 | ●  | ●  | ●  | □  | □  | □  |
| Ladies 13-12 | ●  | ●  | ●  | □  | □  | □  |
| Ladies 14-12 | ●  | □  | □  | □  | □  | □  |
| Ladies 15-12 | ●  | □  | □  | □  | □  | □  |
| Men 16-15    | ●  | ●  | ●  | □  | □  | □  |
| Men 17-16    | ●  | ●  | ●  | □  | □  | □  |
| Men 18-16    | ●  | ●  | ●  | □  | □  | □  |
| Men 19-16    | ●  | ●  | ●  | □  | □  | □  |
| Men 20-18    | ●  | □  | □  | □  | □  | □  |
| Men 22-18    | □  | □  | □  | □  | □  | □  |
| Men 24-20    | □  | □  | □  | □  | □  | □  |







### CHRONISSIMO WATERPROOF

Chronoband für extreme Ansprüche, Speziallänge, waterproof 100 m, Schlaufenanker geschützt  
 chrono strap for extreme demands, special length, waterproof 100 m, loop anchor protected

Art.-Nr. 1370 Men



- Men 18-18 ●
- Men 20-20 ●
- Men 22-20 ●
- Men 24-20 ●

Di-Modell



10

### VENEZUELA

Kalbleder in Alligatoroptik, Schnittkante, Nieten, Kontrastnaht, sportliche Schließe  
 Alligator pattern, cut-edge, rivets, sportbuckle, contrast seam

Art.-Nr. 1220 Men



- Men 20-20 ●
- Men 22-20 ●
- Men 24-20 ●
- Men 26-20 ●

Di-Modell



18

28

10

### TORNADO

für jene, die das Außergewöhnliche suchen, ein Lederband aus sportlichem Kalbleder mit variierbarer Länge (130 mm - 230 mm Bandlänge) - nicht nur für Piloten

for those who are looking for the exceptional - a leather strap with an adjustable length (130 mm - 230 mm length of the strap) made out of sporty calfskin - not only for pilots

Art.-Nr. 1380 Men



- Men 18-18 ●
- Men 20-20 ●
- Men 22-20 ●

Di-Modell



10

### IKARUS

Kalbleder mit „pull-up“ Effekt, Futter mit Kautschukgriff, Nieten, Kontrastnaht beige, lackierte Kante

oil leather, contrast stitching, caoutchouc lining, rivets, contrast seam, coloured edges

Art.-Nr. 1225 Men



- Men 20-20 ●
- Men 22-20 ●
- Men 24-20 ●
- Men 26-20 ●

Di-Modell



20

28

10



### PILOT

weiches genarbttes Rindleder, waterproof 100 m,  
Speziellänge für Chronographen  
smooth naturally, shrunken cowhide leather,  
waterproof 100 m, special length

Art.-Nr. 1235 Men



|           |    |    |
|-----------|----|----|
|           | 28 | 10 |
| Men 20-20 | ●  | ●  |
| Men 22-20 | ●  | ●  |
| Men 24-20 | ●  | ●  |
| Men 26-20 | ●  | ●  |
| Men 28-20 | ●  | ●  |

Di-Modell



### GAUCHO CHRONO

weiches Kalbleder mit Samtgriff, Speziallänge  
für Chronographen, Schlaufenanker geschützt  
velvetlike smooth calfskin, special length for  
chronos, loop anchor protected

Art.-Nr. 1350 Men



|           |    |    |    |    |
|-----------|----|----|----|----|
|           | 06 | 02 | 28 | 10 |
| Men 18-18 | ●  | ●  | ●  | ●  |
| Men 20-18 | ●  | ●  | ●  | ●  |
| Men 22-18 | ●  | ●  | ●  | ●  |
| Men 24-20 | ●  | ●  | ●  | ●  |

Di-Modell



### OFFROAD

pull-up Kalbleder mit Schnittkante, bombiert,  
Sportschließe, Metall- u. Lederschlaufe,  
synthetisches Futtermaterial  
pull-up calf leather, cut-edge, padded,  
sportbuckle, metal/leather loop,  
synthetic lining

Art.-Nr. 1240 Men



|           |    |    |    |
|-----------|----|----|----|
|           | 20 | 28 | 10 |
| Men 20-20 | ●  | ●  | ●  |
| Men 22-20 | ●  | ●  | ●  |
| Men 24-20 | ●  | ●  | ●  |

Di-Modell



### POLO SHERPA WATERPROOF

weiches, sportliches Rindleder, waterproof 100 m,  
Schlaufenanker geschützt  
soft sporty cowhide leather, waterproof 100 m,  
loop anchor protected

Art.-Nr. 1145 Men



|           |    |    |    |    |
|-----------|----|----|----|----|
|           | 19 | 06 | 20 | 10 |
| Men 18-16 | ●  | ●  | ●  | ●  |
| Men 20-18 | ●  | ●  | ●  | ●  |
| Men 22-18 | ●  | ●  | ●  | ●  |

Di-Modell





### RALLYE WATERPROOF

sportliches Kalbleder Loch-Design,  
waterproof 100 m, Schlaufenanker geschützt,  
synthetisches Futtermaterial  
sporty calfskin perforated design,  
waterproof 100 m, loop anchor protected,  
synthetic lining

Art.-Nr. 1230 Men



- 10
- Men 18-18
- Men 20-18
- Men 22-20

Di-Modell



10

### CHRONOLINE BOMBIERT

Kalbleder mit "pull up" Effekt, bombiert  
padded calfskin with "pull up" effect

Art.-Nr. 1200 Men



- 28 10
- Men 18-16
- Men 20-18

Di-Modell



28

10

### DAKAR SATTELLEDER

vegetabil gegerbtes Sattelleder mit  
Doppelwulst, Schlaufenanker geschützt  
Vegetably tanned saddle leather with  
two line padding, loop anchor protected

Art.-Nr. 1270 Men



- 06 02 28 10
- Men 18-18
- Men 20-18

Di-Modell



06

02

28

10

### DESIGN WATERPROOF

Kalbleder mit weichem Kautschuk-Griff,  
Punktelochung, waterproof 100 m  
calfskin with smooth caoutchouc touch,  
with pin holes, waterproof 100 m

Art.-Nr. 1325 Men



- 10
- Men 18-18
- Men 20-20
- Men 22-22

Di-Modell



10



### BALI CHRONO

klassische Louisianaprägung, bombiert, Schnittkante, mit schwerer Edelstahlschließe, Kontrastnaht  
Alligator grain, padded cut-edge constrast seam, heavy stainless steel buckle

Art.-Nr. 3165 Men



|           |    |    |    |    |
|-----------|----|----|----|----|
|           | 06 | 11 | 28 | 10 |
| Men 18-18 | ●  | ●  | ●  | ●  |
| Men 20-20 | ●  | ●  | ●  | ●  |
| Men 22-20 | ●  | ●  | ●  | ●  |
| Men 24-20 | ●  | ●  | ●  | ●  |



### CARBONIO

Hi-Tech Material in Carbonoptik, Kontrastnaht, waterproof 100 m, Schlaufenanker geschützt  
carbon grain, contrast-stitching, waterproof 100 m, loop anchor protected

Art.-Nr. 1360 Men



|           |    |
|-----------|----|
|           | 10 |
| Men 18-16 | ●  |
| Men 20-18 | ●  |
| Men 22-18 | ●  |



### JUMBO

sehr weiches Kalbslederband - Schnittkantenband mit genähter Schlaufe in attraktiven Farben  
genuine calfskin leather - extra-soft material, with cut-edge execution and detailed stitched loops, available in attractive colours

Art.-Nr. 3000 Men



|           |    |    |    |    |
|-----------|----|----|----|----|
|           | 06 | 02 | 28 | 10 |
| Men 18-18 | ●  | ●  | ●  | ●  |
| Men 20-18 | ●  | ●  | ●  | ●  |
| Men 22-20 | ●  | ●  | ●  | ●  |
| Men 24-20 | ●  | ●  | ●  | ●  |
| Men 26-20 | ●  | ●  | ●  | ●  |



### TRAVELLER WATERPROOF

Polyethuran beschichtetes Gewebe, bombiert, in modischen Farben, waterproof 100 m  
PU coated Nylon material, padded in trendy colours, waterproof 100 m

Art.-Nr. 1255 Men



|           |    |    |    |    |    |    |
|-----------|----|----|----|----|----|----|
|           | 03 | 45 | 07 | 19 | 06 | 10 |
| Men 18-16 | ●  | ●  | ●  | ●  | ●  | ●  |
| Men 20-18 | ●  | ●  | ●  | ●  | ●  | ●  |





*Di-Modell*

BASIC

## Mitten im Leben

Where it's happening

### LUXOR WATERPROOF

Kalbleder mit Krokoprägung in modischen Farben, waterproof 100 m, Schlaufenanker geschützt  
 calfskin with croco pattern in fashionable colours, waterproof 100 m, loop anchor protected

Art.-Nr. 1305 Men



|           |    |    |    |    |    |    |
|-----------|----|----|----|----|----|----|
|           | 07 | 05 | 06 | 11 | 28 | 10 |
| Men 18-16 | ●  | ●  | ●  | ●  | ●  | ●  |
| Men 20-18 | ●  | ●  | ●  | ●  | ●  | ●  |





### CASHMERE

Softkalbleder, mit Samtgriff und Carré Wulst, Schlaufenanker geschützt  
velvetlike soft calfskin with square padding, loop anchor protected

Art.-Nr. 1340 Men



|           |                          |                          |                          |                          |
|-----------|--------------------------|--------------------------|--------------------------|--------------------------|
|           | 06                       | 20                       | 28                       | 10                       |
| Men 18-16 | <input type="checkbox"/> | <input type="checkbox"/> | <input type="checkbox"/> | <input type="checkbox"/> |
| Men 20-18 | <input type="checkbox"/> | <input type="checkbox"/> | <input type="checkbox"/> | <input type="checkbox"/> |

Di-Modell



### BALI

elegante Louisiana Prägung auf Kalbleder in modischen Farben, Schlaufenanker geschützt  
elegant Louisiana alligator pattern on calfskin in fashionable colours, loop anchor protected.

Art.-Nr. 2180 Ladies, 2181 XL  
1180 Men, 1181 XL



|              |                                     |                                     |                                     |                                     |                                     |                                     |
|--------------|-------------------------------------|-------------------------------------|-------------------------------------|-------------------------------------|-------------------------------------|-------------------------------------|
|              | 19                                  | 05                                  | 06                                  | 11                                  | 28                                  | 10                                  |
| Ladies 12-10 | <input type="checkbox"/>            | <input type="checkbox"/>            | <input type="checkbox"/>            | <input type="checkbox"/>            | <input type="checkbox"/>            | <input type="checkbox"/>            |
| Ladies 14-12 | <input type="checkbox"/>            | <input type="checkbox"/>            | <input type="checkbox"/>            | <input type="checkbox"/>            | <input type="checkbox"/>            | <input type="checkbox"/>            |
| Ladies 16-14 | <input type="checkbox"/>            | <input type="checkbox"/>            | <input type="checkbox"/>            | <input type="checkbox"/>            | <input type="checkbox"/>            | <input type="checkbox"/>            |
| Ladies 18-14 | <input checked="" type="checkbox"/> | <input checked="" type="checkbox"/> | <input checked="" type="checkbox"/> | <input checked="" type="checkbox"/> | <input checked="" type="checkbox"/> | <input checked="" type="checkbox"/> |
| Ladies 20-18 | <input checked="" type="checkbox"/> | <input checked="" type="checkbox"/> | <input checked="" type="checkbox"/> | <input checked="" type="checkbox"/> | <input checked="" type="checkbox"/> | <input checked="" type="checkbox"/> |
| Ladies 22-18 | <input checked="" type="checkbox"/> | <input checked="" type="checkbox"/> | <input checked="" type="checkbox"/> | <input checked="" type="checkbox"/> | <input checked="" type="checkbox"/> | <input checked="" type="checkbox"/> |
| Men 16-15    | <input checked="" type="checkbox"/> | <input checked="" type="checkbox"/> | <input checked="" type="checkbox"/> | <input checked="" type="checkbox"/> | <input checked="" type="checkbox"/> | <input checked="" type="checkbox"/> |
| Men 18-16    | <input checked="" type="checkbox"/> | <input checked="" type="checkbox"/> | <input checked="" type="checkbox"/> | <input checked="" type="checkbox"/> | <input checked="" type="checkbox"/> | <input checked="" type="checkbox"/> |
| Men 19-18    | <input checked="" type="checkbox"/> | <input checked="" type="checkbox"/> | <input checked="" type="checkbox"/> | <input checked="" type="checkbox"/> | <input checked="" type="checkbox"/> | <input checked="" type="checkbox"/> |
| Men 20-18    | <input checked="" type="checkbox"/> | <input checked="" type="checkbox"/> | <input checked="" type="checkbox"/> | <input checked="" type="checkbox"/> | <input checked="" type="checkbox"/> | <input checked="" type="checkbox"/> |
| Men 22-20    | <input checked="" type="checkbox"/> | <input checked="" type="checkbox"/> | <input checked="" type="checkbox"/> | <input checked="" type="checkbox"/> | <input checked="" type="checkbox"/> | <input checked="" type="checkbox"/> |
| Men 24-22    | <input checked="" type="checkbox"/> | <input checked="" type="checkbox"/> | <input checked="" type="checkbox"/> | <input checked="" type="checkbox"/> | <input checked="" type="checkbox"/> | <input checked="" type="checkbox"/> |

Di-Modell



### HAVANNA

vegetabil gegerbtes Kalbleder, Schlaufenanker geschützt  
vegetably tanned calfskin, loop anchor protected

Art.-Nr. 1375 Men



|           |                          |                          |                          |
|-----------|--------------------------|--------------------------|--------------------------|
|           | 20                       | 28                       | 10                       |
| Men 18-16 | <input type="checkbox"/> | <input type="checkbox"/> | <input type="checkbox"/> |
| Men 20-18 | <input type="checkbox"/> | <input type="checkbox"/> | <input type="checkbox"/> |

Di-Modell



### BALI KN

elegante Louisianaprägung auf Kalbleder in modischen Farben, Kontrastnaht, Schlaufenanker geschützt  
elegant Louisiana alligator pattern on calfskin in fashionable colours, contrast seam, loop anchor protected,

Art.-Nr. 2185 Ladies  
1185 Men



|              |                                     |                                     |                                     |
|--------------|-------------------------------------|-------------------------------------|-------------------------------------|
|              | 11                                  | 28                                  | 10                                  |
| Ladies 12-10 | <input type="checkbox"/>            | <input type="checkbox"/>            | <input type="checkbox"/>            |
| Ladies 14-12 | <input type="checkbox"/>            | <input type="checkbox"/>            | <input type="checkbox"/>            |
| Men 16-15    | <input checked="" type="checkbox"/> | <input checked="" type="checkbox"/> | <input checked="" type="checkbox"/> |
| Men 18-16    | <input checked="" type="checkbox"/> | <input checked="" type="checkbox"/> | <input checked="" type="checkbox"/> |
| Men 20-18    | <input checked="" type="checkbox"/> | <input checked="" type="checkbox"/> | <input checked="" type="checkbox"/> |
| Men 22-20    | <input checked="" type="checkbox"/> | <input checked="" type="checkbox"/> | <input checked="" type="checkbox"/> |

Di-Modell





### SIENA

natürliches Kalbleder mit leichtem, abgenähten Wulst  
 natural smooth calfleather padded and stitched

Art.-Nr. 1065 Men, 1066 XL



|           |                          |                          |                          |
|-----------|--------------------------|--------------------------|--------------------------|
|           | 06                       | 28                       | 10                       |
| Men 18-16 | <input type="checkbox"/> | <input type="checkbox"/> | <input type="checkbox"/> |
| Men 20-18 | <input type="checkbox"/> | <input type="checkbox"/> | <input type="checkbox"/> |
| Men 22-18 | <input type="checkbox"/> | <input type="checkbox"/> | <input type="checkbox"/> |
| Men 24-18 | <input type="checkbox"/> | <input type="checkbox"/> | <input type="checkbox"/> |



### JAVA

elegante Eidechsprägung in modischen Farben  
 elegant lizard patterns in fashionable colours

Art.-Nr. 2320 Ladies  
 1320 Men



|              |                          |                          |                          |                          |                          |                          |
|--------------|--------------------------|--------------------------|--------------------------|--------------------------|--------------------------|--------------------------|
|              | 03                       | 07                       | 19                       | 05                       | 11                       | 10                       |
| Ladies 12-10 | <input type="checkbox"/> | <input type="checkbox"/> | <input type="checkbox"/> | <input type="checkbox"/> | <input type="checkbox"/> | <input type="checkbox"/> |
| Ladies 14-12 | <input type="checkbox"/> | <input type="checkbox"/> | <input type="checkbox"/> | <input type="checkbox"/> | <input type="checkbox"/> | <input type="checkbox"/> |
| Men 16-15    | <input type="checkbox"/> | <input type="checkbox"/> | <input type="checkbox"/> | <input type="checkbox"/> | <input type="checkbox"/> | <input type="checkbox"/> |
| Men 18-16    | <input type="checkbox"/> | <input type="checkbox"/> | <input type="checkbox"/> | <input type="checkbox"/> | <input type="checkbox"/> | <input type="checkbox"/> |
| Men 20-18    | <input type="checkbox"/> | <input type="checkbox"/> | <input type="checkbox"/> | <input type="checkbox"/> | <input type="checkbox"/> | <input type="checkbox"/> |



### GOBI

Kalbleder mit Wildkrokodilprägung  
 in klassischen Farben  
 calfskin with wild croco pattern in  
 classic colours

Art.-Nr. 2095 Ladies  
 1095 Men



|              |                          |                          |                          |
|--------------|--------------------------|--------------------------|--------------------------|
|              | 11                       | 28                       | 10                       |
| Ladies 12-10 | <input type="checkbox"/> | <input type="checkbox"/> | <input type="checkbox"/> |
| Ladies 14-12 | <input type="checkbox"/> | <input type="checkbox"/> | <input type="checkbox"/> |
| Men 18-16    | <input type="checkbox"/> | <input type="checkbox"/> | <input type="checkbox"/> |
| Men 20-18    | <input type="checkbox"/> | <input type="checkbox"/> | <input type="checkbox"/> |



### SAVANNA

echtes Straußenleder ohne Noppen  
 in klassischen Farben, genäht,  
 synthetisches Futtermaterial  
 genuine ostrich leather without nops,  
 stitched, synthetic lining

Art.-Nr. 3020 Men



|           |                          |                          |                          |                          |                          |
|-----------|--------------------------|--------------------------|--------------------------|--------------------------|--------------------------|
|           | 06                       | 13                       | 20                       | 28                       | 10                       |
| Men 18-16 | <input type="checkbox"/> | <input type="checkbox"/> | <input type="checkbox"/> | <input type="checkbox"/> | <input type="checkbox"/> |
| Men 20-18 | <input type="checkbox"/> | <input type="checkbox"/> | <input type="checkbox"/> | <input type="checkbox"/> | <input type="checkbox"/> |

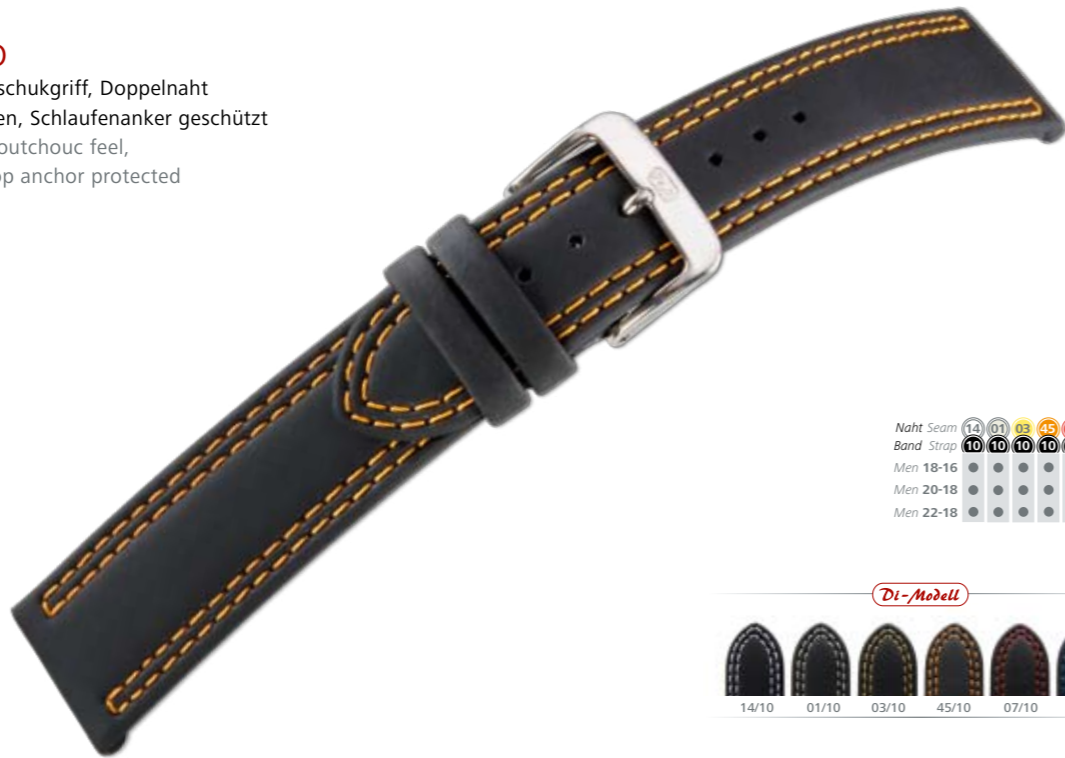




### COLORADO

Kalbleder mit Kautschukgriff, Doppelnaht in modischen Farben, Schlaufenanker geschützt  
 calfleather with caoutchouc feel, coloured seam, loop anchor protected

Art.-Nr. 1245 Men



|            |    |    |    |    |    |    |
|------------|----|----|----|----|----|----|
| Naht Seam  | 14 | 01 | 03 | 45 | 07 | 05 |
| Band Strap | 10 | 10 | 10 | 10 | 10 | 10 |
| Men 18-16  | ●  | ●  | ●  | ●  | ●  | ●  |
| Men 20-18  | ●  | ●  | ●  | ●  | ●  | ●  |
| Men 22-18  | ●  | ●  | ●  | ●  | ●  | ●  |

Di-Modell



14/10 01/10 03/10 45/10 07/10 05/10

### TIFFANY

elegante Krokoprägung auf Kalbleder in klassischen Farben  
 elegant croco pattern on calfskin in classic colours

Art.-Nr. 2330 Ladies  
 1330 Men



|              |    |    |    |    |
|--------------|----|----|----|----|
|              | 06 | 11 | 28 | 10 |
| Ladies 12-10 | ●  | ●  | ●  | ●  |
| Ladies 14-12 | ●  | ●  | ●  | ●  |
| Men 16-15    | ●  | ●  | ●  | ●  |
| Men 18-16    | ●  | ●  | ●  | ●  |
| Men 20-18    | ●  | ●  | ●  | ●  |

Di-Modell



06 11 28 10

### TAIGA

Naturleder vegetabil gegerbt  
 natural leather, vegetably tanned

Art.-Nr. 1335 Men



|           |    |    |    |
|-----------|----|----|----|
|           | 06 | 18 | 10 |
| Men 18-16 | ●  | ●  | ●  |
| Men 20-18 | ●  | ●  | ●  |

Di-Modell



06 18 10

### SOFTINA

Kalbleder mit Samtgriff  
 velvetlike smooth calfskin

Art.-Nr. 2190 Ladies, 2191 XL  
 1190 Men, 1191 XL



|              |    |    |    |    |    |
|--------------|----|----|----|----|----|
|              | 14 | 06 | 20 | 28 | 10 |
| Ladies 9-7,5 | ●  | ●  | ●  | ●  | ●  |
| Ladies 10-9  | □  | □  | □  | □  | □  |
| Ladies 11-10 | □  | □  | □  | □  | □  |
| Ladies 12-10 | □  | □  | □  | □  | □  |
| Ladies 13-12 | □  | □  | □  | □  | □  |
| Ladies 14-12 | □  | □  | □  | □  | □  |
| Ladies 15-14 | □  | □  | □  | □  | □  |
| Ladies 16-14 | □  | □  | □  | □  | □  |
| Ladies 18-16 | ●  | ●  | ●  | ●  | ●  |
| Ladies 20-18 | ●  | ●  | ●  | ●  | ●  |
| Ladies 22-18 | ●  | ●  | ●  | ●  | ●  |
| Men 16-15    | □  | □  | □  | □  | □  |
| Men 17-16    | □  | □  | □  | □  | □  |
| Men 18-16    | □  | □  | □  | □  | □  |
| Men 19-16    | □  | □  | □  | □  | □  |
| Men 20-18    | □  | □  | □  | □  | □  |
| Men 22-20    | □  | □  | □  | □  | □  |
| Men 24-18    | □  | □  | □  | □  | □  |

Di-Modell



14 06 20 28 10



### TOPAS

hochwertiges Kalbleder mit Teju-Eidechsprägung, genäht  
high quality calfskin with Teju-lizard pattern, stitched

Art.-Nr. 2160 Ladies, 2161 XL  
1160 Men, 1161 XL



|              | 07 | 19 | 06 | 13 | 11 | 28 | 10 |
|--------------|----|----|----|----|----|----|----|
| Ladies 10-9  | ●  | ●  | □  | □  | □  | □  | □  |
| Ladies 12-10 | ●  | □  | □  | □  | □  | □  | □  |
| Ladies 14-12 | ●  | □  | □  | □  | □  | □  | □  |
| Men 16-15    | ●  | ●  | ●  | ●  | ●  | ●  | ●  |
| Men 18-16    | ●  | □  | □  | □  | □  | □  | □  |
| Men 20-18    | ●  | □  | □  | □  | □  | □  | □  |



### TIVOLI

Kalbleder mit Straußenprägung, genäht  
fine calfskin with ostrich pattern, stitched

Art.-Nr. 2155 Ladies  
1155 Men



|              | 07 | 06 | 20 | 28 | 10 |
|--------------|----|----|----|----|----|
| Ladies 12-10 | ●  | ●  | ●  | ●  | ●  |
| Ladies 14-12 | ●  | ●  | ●  | ●  | ●  |
| Men 18-16    | ●  | ●  | ●  | ●  | ●  |
| Men 20-18    | ●  | ●  | ●  | ●  | ●  |



### SOFT PIG

weiches Schweinsleder, genäht  
smooth pigskin, stitched

Art.-Nr. 2060 Ladies  
1060 Men



|              | 13 | 18 | 28 | 10 |
|--------------|----|----|----|----|
| Ladies 8-7,5 | ●  | ●  | ●  | ●  |
| Ladies 10-9  | ●  | ●  | ●  | ●  |
| Ladies 12-10 | ●  | ●  | ●  | ●  |
| Ladies 14-12 | ●  | ●  | ●  | ●  |
| Men 16-15    | ●  | ●  | ●  | ●  |
| Men 18-16    | ●  | ●  | ●  | ●  |
| Men 20-18    | ●  | ●  | ●  | ●  |



### MEDIA

Seidentstruktur in klassischen Farben  
silk structured material in classic colours

Art.-Nr. 2365 Ladies  
1365 Men



|              | 47 | 13 | 06 | 10 |
|--------------|----|----|----|----|
| Ladies 12-10 | ●  | ●  | ●  | ●  |
| Ladies 14-12 | ●  | ●  | ●  | ●  |
| Men 16-15    | ●  | ●  | ●  | ●  |
| Men 18-16    | ●  | ●  | ●  | ●  |
| Men 20-18    | ●  | ●  | ●  | ●  |





### KIM

Kalbleder mit Krokoprägung, genäht  
shiny with croco pattern on calfskin, stitched

Art.-Nr. 2055 Ladies, 2056 XL  
1055 Men, 1056 XL



|              |                                     |                                     |
|--------------|-------------------------------------|-------------------------------------|
| Ladies 10-9  | <input checked="" type="checkbox"/> | <input checked="" type="checkbox"/> |
| Ladies 12-10 | <input type="checkbox"/>            | <input type="checkbox"/>            |
| Ladies 14-12 | <input type="checkbox"/>            | <input type="checkbox"/>            |
| Ladies 16-12 | <input type="checkbox"/>            | <input type="checkbox"/>            |
| Ladies 18-14 | <input type="checkbox"/>            | <input type="checkbox"/>            |
| Men 16-15    | <input checked="" type="checkbox"/> | <input checked="" type="checkbox"/> |
| Men 18-16    | <input type="checkbox"/>            | <input type="checkbox"/>            |
| Men 20-18    | <input type="checkbox"/>            | <input type="checkbox"/>            |

Di-Modell



### CAMEL

sportives Kalbleder, synthetisches Futtermaterial  
sportive calfskin, synthetic lining

Art.-Nr. 1195 Men



|           |                                     |                                     |                                     |                                     |
|-----------|-------------------------------------|-------------------------------------|-------------------------------------|-------------------------------------|
| Men 16-15 | <input checked="" type="checkbox"/> | <input checked="" type="checkbox"/> | <input checked="" type="checkbox"/> | <input checked="" type="checkbox"/> |
| Men 18-16 | <input type="checkbox"/>            | <input type="checkbox"/>            | <input type="checkbox"/>            | <input type="checkbox"/>            |
| Men 20-18 | <input type="checkbox"/>            | <input type="checkbox"/>            | <input type="checkbox"/>            | <input type="checkbox"/>            |

Di-Modell



### BRILLANT

modische Eidechsprägung, genäht  
fashionable lizard pattern, stitched

Art.-Nr. 2125 Ladies, 2126 XL  
1125 Men, 1126 XL



|              |                                     |                                     |                                     |                                     |                                     |                                     |
|--------------|-------------------------------------|-------------------------------------|-------------------------------------|-------------------------------------|-------------------------------------|-------------------------------------|
| Ladies 9-8   | <input checked="" type="checkbox"/> | <input checked="" type="checkbox"/> | <input checked="" type="checkbox"/> | <input checked="" type="checkbox"/> | <input checked="" type="checkbox"/> | <input checked="" type="checkbox"/> |
| Ladies 10-9  | <input type="checkbox"/>            | <input type="checkbox"/>            | <input type="checkbox"/>            | <input type="checkbox"/>            | <input type="checkbox"/>            | <input type="checkbox"/>            |
| Ladies 11-10 | <input type="checkbox"/>            | <input type="checkbox"/>            | <input type="checkbox"/>            | <input type="checkbox"/>            | <input type="checkbox"/>            | <input type="checkbox"/>            |
| Ladies 12-10 | <input type="checkbox"/>            | <input type="checkbox"/>            | <input type="checkbox"/>            | <input type="checkbox"/>            | <input type="checkbox"/>            | <input type="checkbox"/>            |
| Ladies 13-12 | <input type="checkbox"/>            | <input type="checkbox"/>            | <input type="checkbox"/>            | <input type="checkbox"/>            | <input type="checkbox"/>            | <input type="checkbox"/>            |
| Ladies 14-12 | <input type="checkbox"/>            | <input type="checkbox"/>            | <input type="checkbox"/>            | <input type="checkbox"/>            | <input type="checkbox"/>            | <input type="checkbox"/>            |
| Ladies 15-12 | <input type="checkbox"/>            | <input type="checkbox"/>            | <input type="checkbox"/>            | <input type="checkbox"/>            | <input type="checkbox"/>            | <input type="checkbox"/>            |
| Ladies 16-14 | <input type="checkbox"/>            | <input type="checkbox"/>            | <input type="checkbox"/>            | <input type="checkbox"/>            | <input type="checkbox"/>            | <input type="checkbox"/>            |
| Ladies 18-14 | <input type="checkbox"/>            | <input type="checkbox"/>            | <input type="checkbox"/>            | <input type="checkbox"/>            | <input type="checkbox"/>            | <input type="checkbox"/>            |
| Men 16-15    | <input type="checkbox"/>            | <input type="checkbox"/>            | <input type="checkbox"/>            | <input type="checkbox"/>            | <input type="checkbox"/>            | <input type="checkbox"/>            |
| Men 17-16    | <input type="checkbox"/>            | <input type="checkbox"/>            | <input type="checkbox"/>            | <input type="checkbox"/>            | <input type="checkbox"/>            | <input type="checkbox"/>            |
| Men 18-16    | <input type="checkbox"/>            | <input type="checkbox"/>            | <input type="checkbox"/>            | <input type="checkbox"/>            | <input type="checkbox"/>            | <input type="checkbox"/>            |
| Men 19-16    | <input type="checkbox"/>            | <input type="checkbox"/>            | <input type="checkbox"/>            | <input type="checkbox"/>            | <input type="checkbox"/>            | <input type="checkbox"/>            |
| Men 20-18    | <input type="checkbox"/>            | <input type="checkbox"/>            | <input type="checkbox"/>            | <input type="checkbox"/>            | <input type="checkbox"/>            | <input type="checkbox"/>            |

Di-Modell



### ELEGANCE/ ELEGANCE ZUM KLEBEN

Softkalbleder mit Samtgriff gleichlaufend  
velvetlike soft calfskin, untapered

Art.-Nr. 2280 Ladies, 2284 kleben / gluing  
1280 Men, 1284 kleben / gluing



|              |                                     |                                     |                                     |                                     |                                     |                                     |                                     |                                     |                                     |
|--------------|-------------------------------------|-------------------------------------|-------------------------------------|-------------------------------------|-------------------------------------|-------------------------------------|-------------------------------------|-------------------------------------|-------------------------------------|
| Ladies 14-14 | <input checked="" type="checkbox"/> | <input checked="" type="checkbox"/> | <input checked="" type="checkbox"/> | <input checked="" type="checkbox"/> | <input checked="" type="checkbox"/> | <input checked="" type="checkbox"/> | <input checked="" type="checkbox"/> | <input checked="" type="checkbox"/> | <input checked="" type="checkbox"/> |
| Ladies 16-16 | <input type="checkbox"/>            | <input type="checkbox"/>            | <input type="checkbox"/>            | <input type="checkbox"/>            | <input type="checkbox"/>            | <input type="checkbox"/>            | <input type="checkbox"/>            | <input type="checkbox"/>            | <input type="checkbox"/>            |
| Ladies 18-18 | <input type="checkbox"/>            | <input type="checkbox"/>            | <input type="checkbox"/>            | <input type="checkbox"/>            | <input type="checkbox"/>            | <input type="checkbox"/>            | <input type="checkbox"/>            | <input type="checkbox"/>            | <input type="checkbox"/>            |
| Ladies 20-20 | <input type="checkbox"/>            | <input type="checkbox"/>            | <input type="checkbox"/>            | <input type="checkbox"/>            | <input type="checkbox"/>            | <input type="checkbox"/>            | <input type="checkbox"/>            | <input type="checkbox"/>            | <input type="checkbox"/>            |
| Ladies 22-22 | <input type="checkbox"/>            | <input type="checkbox"/>            | <input type="checkbox"/>            | <input type="checkbox"/>            | <input type="checkbox"/>            | <input type="checkbox"/>            | <input type="checkbox"/>            | <input type="checkbox"/>            | <input type="checkbox"/>            |
| Men 16-16    | <input type="checkbox"/>            | <input type="checkbox"/>            | <input type="checkbox"/>            | <input type="checkbox"/>            | <input type="checkbox"/>            | <input type="checkbox"/>            | <input type="checkbox"/>            | <input type="checkbox"/>            | <input type="checkbox"/>            |
| Men 18-18    | <input type="checkbox"/>            | <input type="checkbox"/>            | <input type="checkbox"/>            | <input type="checkbox"/>            | <input type="checkbox"/>            | <input type="checkbox"/>            | <input type="checkbox"/>            | <input type="checkbox"/>            | <input type="checkbox"/>            |
| Men 20-20    | <input type="checkbox"/>            | <input type="checkbox"/>            | <input type="checkbox"/>            | <input type="checkbox"/>            | <input type="checkbox"/>            | <input type="checkbox"/>            | <input type="checkbox"/>            | <input type="checkbox"/>            | <input type="checkbox"/>            |
| Men 22-22    | <input type="checkbox"/>            | <input type="checkbox"/>            | <input type="checkbox"/>            | <input type="checkbox"/>            | <input type="checkbox"/>            | <input type="checkbox"/>            | <input type="checkbox"/>            | <input type="checkbox"/>            | <input type="checkbox"/>            |

Di-Modell





### NAPPA WATERPROOF

feines Kalbleder in klassischen Farben,  
waterproof 100m  
fine calfskin in classic colours, waterproof 100m

Art.-Nr. 2020 Ladies, 2021 XL  
1020 Men, 1021 XL



|              | 14                       | 01                       | 08                       | 19                       | 06                       | 13                       | 18                       | 28                       | 10                       |
|--------------|--------------------------|--------------------------|--------------------------|--------------------------|--------------------------|--------------------------|--------------------------|--------------------------|--------------------------|
| Ladies 6-6   | <input type="checkbox"/> | <input type="checkbox"/> | <input type="checkbox"/> | <input type="checkbox"/> | <input type="checkbox"/> | <input type="checkbox"/> | <input type="checkbox"/> | <input type="checkbox"/> | <input type="checkbox"/> |
| Ladies 8-7,5 | <input type="checkbox"/> | <input type="checkbox"/> | <input type="checkbox"/> | <input type="checkbox"/> | <input type="checkbox"/> | <input type="checkbox"/> | <input type="checkbox"/> | <input type="checkbox"/> | <input type="checkbox"/> |
| Ladies 10-9  | <input type="checkbox"/> | <input type="checkbox"/> | <input type="checkbox"/> | <input type="checkbox"/> | <input type="checkbox"/> | <input type="checkbox"/> | <input type="checkbox"/> | <input type="checkbox"/> | <input type="checkbox"/> |
| Ladies 12-10 | <input type="checkbox"/> | <input type="checkbox"/> | <input type="checkbox"/> | <input type="checkbox"/> | <input type="checkbox"/> | <input type="checkbox"/> | <input type="checkbox"/> | <input type="checkbox"/> | <input type="checkbox"/> |
| Ladies 13-12 | <input type="checkbox"/> | <input type="checkbox"/> | <input type="checkbox"/> | <input type="checkbox"/> | <input type="checkbox"/> | <input type="checkbox"/> | <input type="checkbox"/> | <input type="checkbox"/> | <input type="checkbox"/> |
| Ladies 14-12 | <input type="checkbox"/> | <input type="checkbox"/> | <input type="checkbox"/> | <input type="checkbox"/> | <input type="checkbox"/> | <input type="checkbox"/> | <input type="checkbox"/> | <input type="checkbox"/> | <input type="checkbox"/> |
| Ladies 15-14 | <input type="checkbox"/> | <input type="checkbox"/> | <input type="checkbox"/> | <input type="checkbox"/> | <input type="checkbox"/> | <input type="checkbox"/> | <input type="checkbox"/> | <input type="checkbox"/> | <input type="checkbox"/> |
| Ladies 16-14 | <input type="checkbox"/> | <input type="checkbox"/> | <input type="checkbox"/> | <input type="checkbox"/> | <input type="checkbox"/> | <input type="checkbox"/> | <input type="checkbox"/> | <input type="checkbox"/> | <input type="checkbox"/> |
| Ladies 18-14 | <input type="checkbox"/> | <input type="checkbox"/> | <input type="checkbox"/> | <input type="checkbox"/> | <input type="checkbox"/> | <input type="checkbox"/> | <input type="checkbox"/> | <input type="checkbox"/> | <input type="checkbox"/> |
| Ladies 20-18 | <input type="checkbox"/> | <input type="checkbox"/> | <input type="checkbox"/> | <input type="checkbox"/> | <input type="checkbox"/> | <input type="checkbox"/> | <input type="checkbox"/> | <input type="checkbox"/> | <input type="checkbox"/> |
| Men 16-15    | <input type="checkbox"/> | <input type="checkbox"/> | <input type="checkbox"/> | <input type="checkbox"/> | <input type="checkbox"/> | <input type="checkbox"/> | <input type="checkbox"/> | <input type="checkbox"/> | <input type="checkbox"/> |
| Men 17-16    | <input type="checkbox"/> | <input type="checkbox"/> | <input type="checkbox"/> | <input type="checkbox"/> | <input type="checkbox"/> | <input type="checkbox"/> | <input type="checkbox"/> | <input type="checkbox"/> | <input type="checkbox"/> |
| Men 18-16    | <input type="checkbox"/> | <input type="checkbox"/> | <input type="checkbox"/> | <input type="checkbox"/> | <input type="checkbox"/> | <input type="checkbox"/> | <input type="checkbox"/> | <input type="checkbox"/> | <input type="checkbox"/> |
| Men 19-18    | <input type="checkbox"/> | <input type="checkbox"/> | <input type="checkbox"/> | <input type="checkbox"/> | <input type="checkbox"/> | <input type="checkbox"/> | <input type="checkbox"/> | <input type="checkbox"/> | <input type="checkbox"/> |
| Men 20-18    | <input type="checkbox"/> | <input type="checkbox"/> | <input type="checkbox"/> | <input type="checkbox"/> | <input type="checkbox"/> | <input type="checkbox"/> | <input type="checkbox"/> | <input type="checkbox"/> | <input type="checkbox"/> |
| Men 22-18    | <input type="checkbox"/> | <input type="checkbox"/> | <input type="checkbox"/> | <input type="checkbox"/> | <input type="checkbox"/> | <input type="checkbox"/> | <input type="checkbox"/> | <input type="checkbox"/> | <input type="checkbox"/> |
| Men 24-18    | <input type="checkbox"/> | <input type="checkbox"/> | <input type="checkbox"/> | <input type="checkbox"/> | <input type="checkbox"/> | <input type="checkbox"/> | <input type="checkbox"/> | <input type="checkbox"/> | <input type="checkbox"/> |



### BELLA

Lackleder, glatt  
lacquered leather, unstitched

Art.-Nr. 2210 Ladies



|              | 14                       | 10                       |
|--------------|--------------------------|--------------------------|
| Ladies 14-12 | <input type="checkbox"/> | <input type="checkbox"/> |
| Ladies 16-14 | <input type="checkbox"/> | <input type="checkbox"/> |
| Ladies 18-14 | <input type="checkbox"/> | <input type="checkbox"/> |



### NAPPA CLIP

glattes Kalbleder mit Metallclip  
fine calfskin with metal clip

Art.-Nr. 2015 Ladies, 2016 XL  
1015 Men, 1016 XL



|               | 14                       | 06                       | 28                       | 10                       |
|---------------|--------------------------|--------------------------|--------------------------|--------------------------|
| Ladies 6-6    | <input type="checkbox"/> | <input type="checkbox"/> | <input type="checkbox"/> | <input type="checkbox"/> |
| Ladies 8-7,5  | <input type="checkbox"/> | <input type="checkbox"/> | <input type="checkbox"/> | <input type="checkbox"/> |
| Ladies 10-7,5 | <input type="checkbox"/> | <input type="checkbox"/> | <input type="checkbox"/> | <input type="checkbox"/> |
| Ladies 12-7,5 | <input type="checkbox"/> | <input type="checkbox"/> | <input type="checkbox"/> | <input type="checkbox"/> |
| Ladies 14-7,5 | <input type="checkbox"/> | <input type="checkbox"/> | <input type="checkbox"/> | <input type="checkbox"/> |
| Men 16-14     | <input type="checkbox"/> | <input type="checkbox"/> | <input type="checkbox"/> | <input type="checkbox"/> |
| Men 18-14     | <input type="checkbox"/> | <input type="checkbox"/> | <input type="checkbox"/> | <input type="checkbox"/> |
| Men 20-14     | <input type="checkbox"/> | <input type="checkbox"/> | <input type="checkbox"/> | <input type="checkbox"/> |



### LIFESTYLE

feinstes Kalbleder, genäht, in modischen Farben  
fine calfleather, stitched, in fashion colours

Art.-Nr. 3055 Ladies



|              | 01                       | 03                       | 45                       | 07                       | 27                       | 08                       | 04                       | 48                       | 17                       |
|--------------|--------------------------|--------------------------|--------------------------|--------------------------|--------------------------|--------------------------|--------------------------|--------------------------|--------------------------|
| Ladies 14-12 | <input type="checkbox"/> | <input type="checkbox"/> | <input type="checkbox"/> | <input type="checkbox"/> | <input type="checkbox"/> | <input type="checkbox"/> | <input type="checkbox"/> | <input type="checkbox"/> | <input type="checkbox"/> |
| Ladies 16-14 | <input type="checkbox"/> | <input type="checkbox"/> | <input type="checkbox"/> | <input type="checkbox"/> | <input type="checkbox"/> | <input type="checkbox"/> | <input type="checkbox"/> | <input type="checkbox"/> | <input type="checkbox"/> |
| Ladies 18-16 | <input type="checkbox"/> | <input type="checkbox"/> | <input type="checkbox"/> | <input type="checkbox"/> | <input type="checkbox"/> | <input type="checkbox"/> | <input type="checkbox"/> | <input type="checkbox"/> | <input type="checkbox"/> |
| Ladies 20-18 | <input type="checkbox"/> | <input type="checkbox"/> | <input type="checkbox"/> | <input type="checkbox"/> | <input type="checkbox"/> | <input type="checkbox"/> | <input type="checkbox"/> | <input type="checkbox"/> | <input type="checkbox"/> |



# MANUFAKTUR

BASIC

## DERBY

Kalbleder genäht, synthetisches Futtermaterial  
calfskin stitched, synthetic lining

Art.-Nr. 2165 Ladies  
1165 Men



|              | 14 | 08 | 06 | 15 | 20 | 28 | 10 |
|--------------|----|----|----|----|----|----|----|
| Ladies 10-9  | ●  | ●  | ●  | ●  | ●  | ●  | ●  |
| Ladies 12-10 | ●  | ●  | ●  | ●  | ●  | ●  | ●  |
| Ladies 14-12 | ●  | ●  | ●  | ●  | ●  | ●  | ●  |
| Men 16-15    | ●  | ●  | ●  | ●  | ●  | ●  | ●  |
| Men 18-16    | ●  | ●  | ●  | ●  | ●  | ●  | ●  |
| Men 20-18    | ●  | ●  | ●  | ●  | ●  | ●  | ●  |





FALTSCHLIESSEN

Di-Modell  
FALTSCHLIESSEN

### KROKODIL FS

hochwertiges Krokodilleder mit Faltschließe  
high quality crocodile leather with  
deployment buckle

Art.-Nr. 2093 Ladies  
1092 Men



|           |    |    |    |
|-----------|----|----|----|
|           | 11 | 28 | 10 |
| Men 16-16 | ●  | ●  | ●  |
| Men 18-16 | ●  | ●  | ●  |
| Men 20-18 | ●  | ●  | ●  |



### EIDECHSE FS

elegantes Eidechsenleder mit Faltschließe  
elegant genuine lizard leather with  
deployment buckle

Art.-Nr. 1079 Men



|           |    |    |
|-----------|----|----|
|           | 28 | 10 |
| Men 16-16 | ●  | ●  |
| Men 18-16 | ●  | ●  |
| Men 20-18 | ●  | ●  |





### BALI FS

elegant klassische Krokoprägung mit Faltschließe  
elegant croco pattern with deployment buckle

Art.-Nr. 2183 Ladies  
1152 Men



|           |    |    |    |
|-----------|----|----|----|
|           | 11 | 28 | 10 |
| Men 18-18 | ●  | ●  | ●  |
| Men 20-18 | ●  | ●  | ●  |

Di-Modell



### CARBON CHRONO FS

Kalbleder mit Karbonoptik, schwere Faltschließe mit Sicherheitsverschluss, waterproof 100 m, AERO-Futter patentiert  
carbon pattern on calfskin, heavy deployment buckle with security lock, waterproof 100 m, AERO lining patented

Art.-Nr. 1242 Men



|           |    |
|-----------|----|
|           | 10 |
| Men 18-18 | ●  |
| Men 20-18 | ●  |
| Men 22-18 | ●  |

Di-Modell



### OREGON FS

vegetabil gegerbtes Sattelleder mit Faltschließe  
vegetably tanned saddle leather with deployment buckle

Art.-Nr. 1177 Men



|           |    |    |    |    |
|-----------|----|----|----|----|
|           | 06 | 02 | 28 | 10 |
| Men 18-16 | ●  | ●  | ●  | ●  |
| Men 20-18 | ●  | ●  | ●  | ●  |

Di-Modell



### HAIFISCH FS

echtes Haifischleder mit Faltschließe in Trendfarben, waterproof 100 m  
genuine sharkskin with deployment buckle in trendy colours, waterproof 100 m.

Art.-Nr. 1212 Men



|           |    |    |    |    |    |
|-----------|----|----|----|----|----|
|           | 19 | 05 | 06 | 28 | 10 |
| Men 18-16 | ●  | ●  | ●  | ●  | ●  |
| Men 20-18 | ●  | ●  | ●  | ●  | ●  |

Di-Modell



## Merchandising Displays

### Hervorragende Präsentation

Unsere eleganten Displays sind diebstahlsicher. Ganz nach Ihren Anforderungen erhalten Sie die Präsentations-Displays in verschiedenen Größen.

Gerne unterbreiten wir Ihnen ein individuelles Angebot für die Erstbestückung Ihres Präsentationssystems.

### Merchandising Display

Our elegant displays are pilfer proof, available in various sizes to accommodate your needs.

On request you will get a quotation for a custom made display.



Art.-Nr. 5064

### Thekendisplay Holz

für ca. 150 Bänder, B 36 x T 33 x H 21 cm, Buche

### Wooden table display

for 150 straps, W 36 x L 33 x H 21 cm, beech



Art.-Nr. 5022

### Verkaufsständer mit Holzverkleidung

für ca. 610 Bänder, B 40 x T 38 x H 57 cm, Buche

### Wooden merchandising Display

for 610 straps, W 40 x L 38 x H 57 cm, beech



Art.-Nr. 5061

### Standardelement aus Holz Wooden floor stand

Art.-Nr. 5060

### Unterschrank aus Holz Wooden base cabinet

# Di-Modell

## PRÄSENTATION



**Art.-Nr. 5022**  
**Bilderrahmen**  
 für 18 Bänder, zum Aufhängen oder als Thekenaufsteller,  
 B 36 x H 32 cm, blau

**Presentation frame**  
 „picture“ frame for 18 straps, to be either wall mounted or  
 with stand, W 36 x H 32 cm, blue



**Art.-Nr. 5085**  
**Mappe**  
 mit 4 beflockten Einsätzen, grau

**Presentation book**  
 with 4 trays, grey

**Art.-Nr. 5022**  
**Bänderkassette**  
 mit 5 Vorlagentablets für 90 Bänder

**Cassette**  
 with 5 trays for 90 straps



**Art.-Nr. 5086**  
**Mappe**  
 mit 8 beflockten Einsätzen, grau

**Presentation book**  
 with 8 trays, grey



FARBEN

Colours

|  |    |             |          |
|--|----|-------------|----------|
|  | 10 | schwarz     | black    |
|  | 28 | dunkelbraun | d'brown  |
|  | 11 | gold        | gold     |
|  | 18 | mittelbraun | m'brown  |
|  | 20 | rotbraun    | r'brown  |
|  | 02 | hellbraun   | l'brown  |
|  | 13 | dunkelgrau  | d'grey   |
|  | 47 | silber      | silver   |
|  | 15 | hellgrau    | l'grey   |
|  | 06 | dunkelblau  | navy     |
|  | 05 | mittelblau  | m'blue   |
|  | 17 | hellblau    | l'blue   |
|  | 19 | dunkelgrün  | d'green  |
|  | 48 | oliv        | olive    |
|  | 04 | hellgrün    | l'green  |
|  | 08 | bordeau     | burgundy |
|  | 27 | rosa        | rose     |
|  | 07 | rot         | red      |
|  | 45 | orange      | orange   |
|  | 25 | mais        | maize    |
|  | 03 | gelb        | yellow   |
|  | 01 | beige       | beige    |
|  | 14 | weiß        | white    |

Schließenummern

buckle codes

- 2 Schließe Edelstahl blank
- 5 Schließe Edelstahl vergoldet
- 3 Faltschließe Edelstahl blank
- 4 Faltschließe Edelstahl vergoldet
- 6 Schließe kunststoffbeschichtet

- 2 buckle stainless steel polished
- 5 buckle stainless steel gold-plated
- 3 deployment buckle stainless steel polished
- 4 deployment buckle stainless steel gold-plated
- 6 buckle PU coated



Art.-Nr. 5070

Schließe Di-Modell  
Edelstahl vergoldet

buckle Di-Modell  
stainless steel gold plated



Art.-Nr. 5070

Schließe 89  
Edelstahl vergoldet

buckle 89  
stainless steel gold plated



Art.-Nr. 5076

Schließe 1900  
Edelstahl vergoldet

buckle 1900  
stainless steel gold plated



Art.-Nr. 5072

Sportschließe  
Edelstahl vergoldet

sport buckle  
stainless steel gold plated



Art.-Nr. 5071

Schließe  
kunststofflackiert

buckle  
PU coated black



Art.-Nr. 5075

Titanschließe

Titan buckle

ERSATZSCHLIESSEN

replacement buckles

|                                       | 7,5 | 8 | 9 | 10 | 12 | 14 | 15 | 16 | 18 | 20 | 22 |
|---------------------------------------|-----|---|---|----|----|----|----|----|----|----|----|
| Art.-Nr. 5070 (Edelstahl vergoldet)   |     |   |   | ●  | ●  | ●  | ●  | ●  | ●  | ●  |    |
| Art.-Nr. 5070 (Edelstahl poliert)     |     |   |   | ●  | ●  | ●  | ●  | ●  | ●  | ●  |    |
| Art.-Nr. 5070 (Schließe 89 vergoldet) | ●   | ● | ● |    |    |    |    |    |    |    |    |
| Art.-Nr. 5070 (Schließe 89 poliert)   | ●   | ● | ● |    |    |    |    |    |    |    |    |
| Art.-Nr. 5076 (Edelstahl vergoldet)   |     |   |   |    |    |    |    |    |    | ●  | ●  |
| Art.-Nr. 5076 (Edelstahl poliert)     |     |   |   |    |    |    |    |    |    | ●  | ●  |
| Art.-Nr. 5072 (Edelstahl vergoldet)   |     |   |   |    |    |    |    | ●  | ●  |    |    |
| Art.-Nr. 5072 (Edelstahl poliert)     |     |   |   |    |    |    |    | ●  | ●  |    |    |
| Art.-Nr. 5071                         | ●   |   | ● | ●  | ●  | ●  | ●  | ●  | ●  | ●  |    |
| Art.-Nr. 5075                         |     | ● |   | ●  | ●  | ●  |    | ●  | ●  | ●  |    |

Name

Unverbindliche Preisempfehlung suggested retail price

Bandbreite width

Alligator

€ 149,00



Barcode

Di-Modell

1600-10182

Unverb. Preis 13 pl.

Schließnummer lt. Liste buckle code per list

Anstoßbreite endwidth

Farbnummer lt. Liste colour code per list

Artikel-Nummer lt Di-Modell Preisliste  
item number per Di-Modell catalogue

### Garantiezeitfikat



**Di-Modell**  
UHRARMBÄNDER

Sehr verehrter Kunde,  
wir beglückwünschen Sie zum Kauf dieses exklusiven Di-Modell Uhrbandes und wünschen Ihnen damit viel Freude. Die herausragenden Eigenschaften Ihres Di-Modell Uhrbandes sind:

- Markenprodukt mit „Made in Germany“ und von höchster Qualität.
  - **Vertrauen in Leder!** Die von uns verwendeten Materialien werden laufend überprüft und entsprechen den gesetzlichen Bestimmungen der Bedarfsgegenstandsverordnung bezüglich PCP, Azo-Farbstoffen und anderen Inhaltsstoffen.
  - Kulanz-Garantie auf fertigungstechnische Mängel.
  - Schlaufenanker (international geschützt) für höchsten Tragekomfort.
  - Patentiertes AERO-Futter, atmungsaktiv, hautsympathisch und aus Erfahrung antiallergisch (bei den entsprechenden Artikeln in Verwendung).
- Das Lederband Ihrer Uhr ist ein Verschleißteil und als Naturprodukt besonders gefährdet, vor allem durch Feuchtigkeit, Schweiß, Chemikalien und Abrieb, es hat deshalb nur eine begrenzte Haltbarkeit und sollte (auch aus hygienischen Gründen) je nach Tragegewohnheit alle 6 - 12 Monate erneuert werden.

*Claus-Peter Ehlbeck*  
Claus-Peter Ehlbeck

Di-Modell GmbH & Co KG  
ausgeliefert durch:

Di-Modell